

JET

JCDC-3.0

Cyclone Dust Collector

JCDC-3.0-T717530T3~400V, 50Hz

PARTS LIST

JPW (Tool) AG

Tämperlistr. 5

CH-8117 Fällanden

Switzerland

Phone +41 44 806 47 48

Fax +41 44 806 47 58

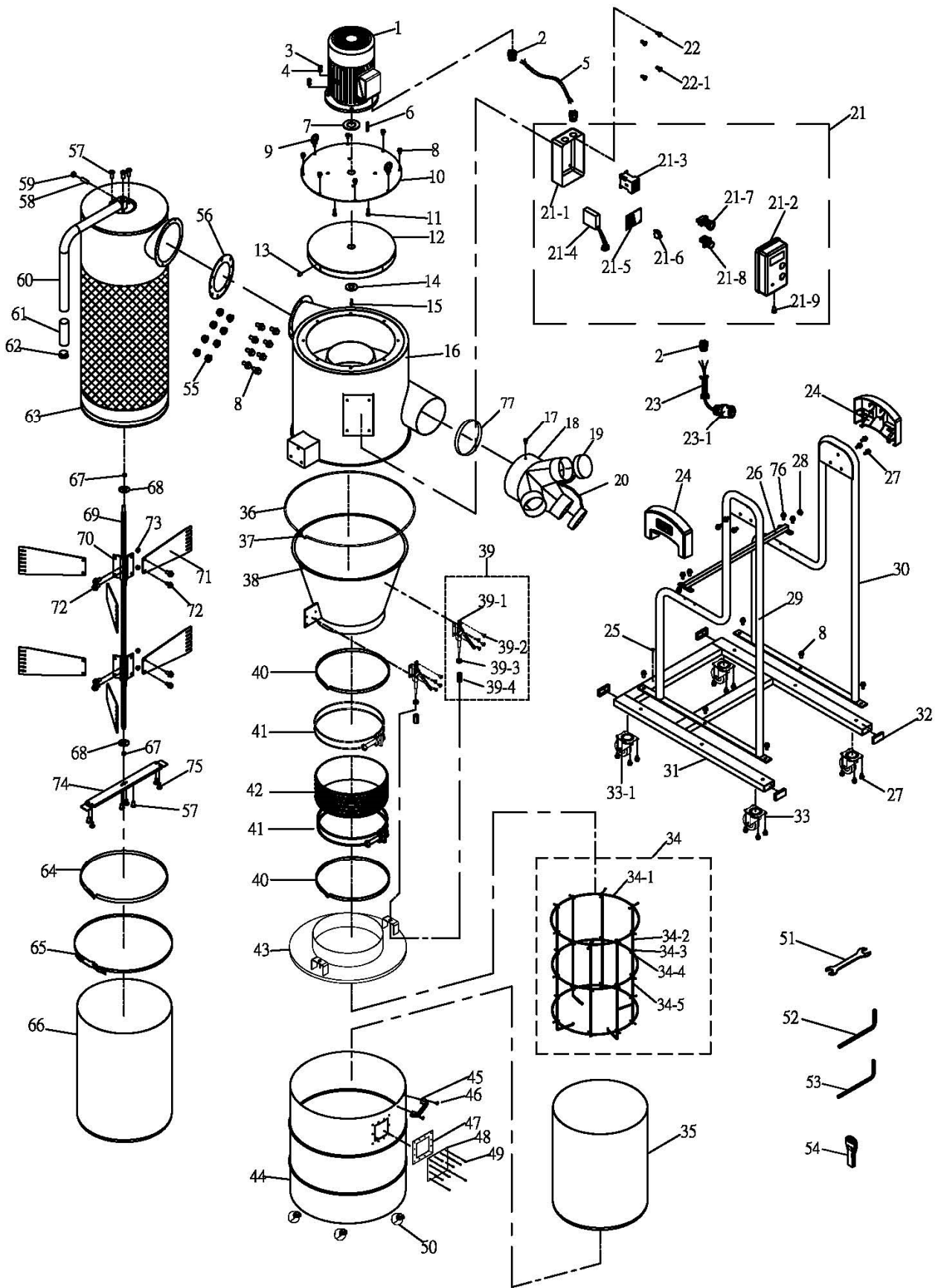
www.jettools.com

P-717530T

2016-04



Parts Breakdown for JCDC-3.0-T Cyclone Dust Collector



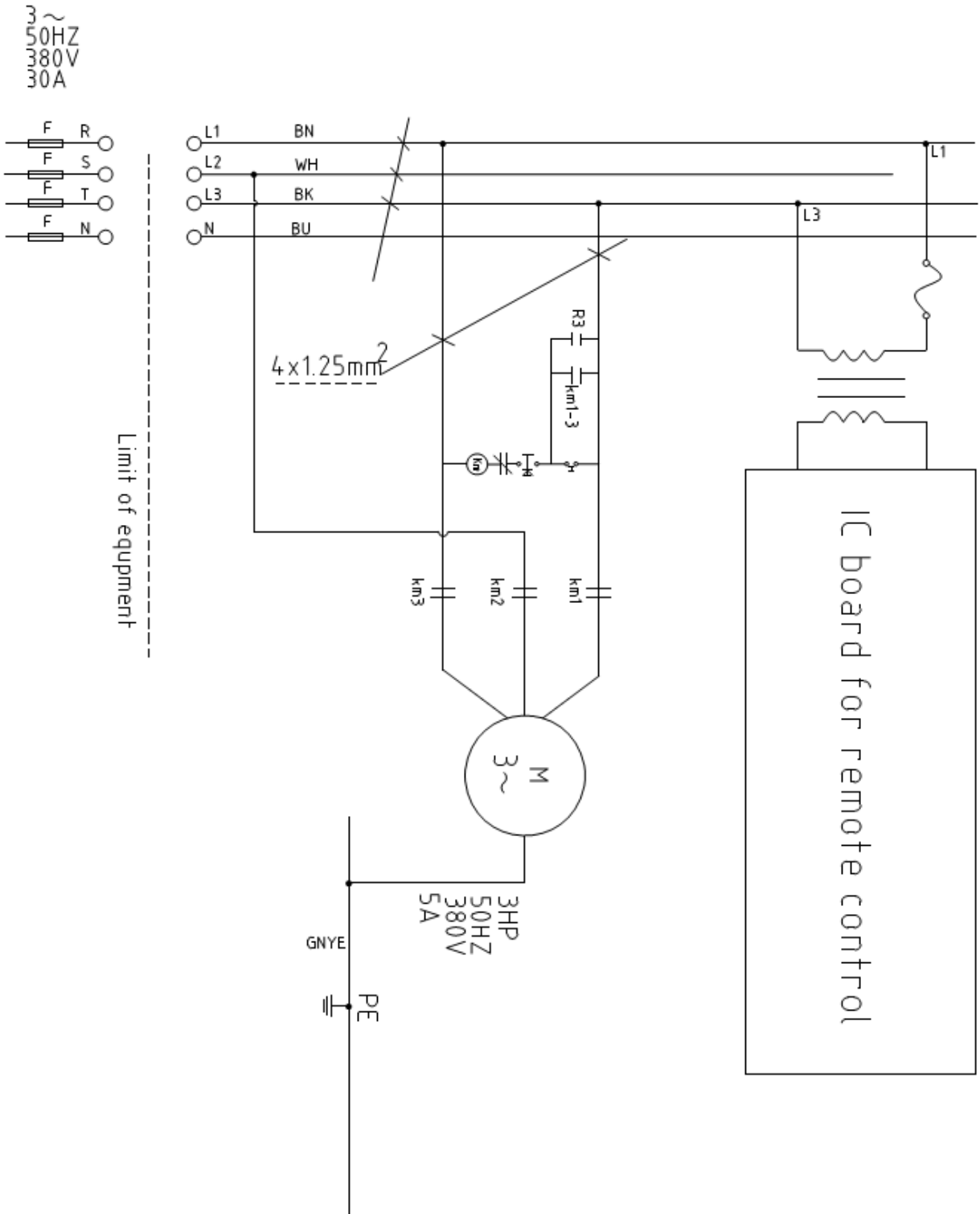
Parts List for JCDC-3.0-T Cyclone Dust Collector

| Index No. | Part No. | Description | Size | Qty. |
|-----------|--------------|--|-----------------------------|------|
| 1 | 502-B868 | Motor | 3HP/380V/50HZ/3PH | 1 |
| | 502-B868 | Motor (UK) | 3HP/400V/50HZ/3PH | 1 |
| | JCDC1.5-01FC | Fan Cover (not shown) | | 1 |
| | JCDC1.5-01CF | Cooling Fan (not shown) | | 1 |
| 2 | JCDC1.5-02 | Strain Relief | M20-13B/PG20 | 3 |
| 3 | TS-0570021 | Hex Nut | 5/16" | 4 |
| 4 | TS-0720081 | Lock Washer | 5/16" | 4 |
| 5 | 503-J343 | Motor Cord | 1.5mm ² x4Cx75CM | 1 |
| 6 | JCDC2-06 | Key | 7 x 7 x 25 | 1 |
| 7 | JCDC2-07 | Rubber Seal | | 1 |
| 8 | JCDC1.5-07 | Hex Flange Head Screw | 5/16" x 3/4" | 20 |
| 9 | JCDC1.5-08 | Eye Bolt | 5/16" | 2 |
| 10 | JCDC3-10 | Motor Plate | | 1 |
| 11 | TS-0051051 | Hex Cap Screw | 5/16" x 1" | 4 |
| 12 | JCDC3-12 | Impeller | Dia. 15" | 1 |
| 13 | TS-0271071 | Socket Set Screw | 3/8" x 3/4" | 1 |
| 14 | JCDC1.5-14 | Lock Washer | Exclusive | 1 |
| 15 | JCDC1.5-15 | Socket Head Cap Screw (Left Thread) | M6 x 20 | 1 |
| 16 | JCDC3-16 | Intake Barrel | | 1 |
| 17 | 5513357 | Mach Screw, Pan HD, Phillips | 3/16" x 3/8" | 1 |
| 18A | JCDC3-18A | Inlet Adaptor Assembly (Index #18,19,20) | | 1 |
| 18 | JCDC3-18 | Inlet Adaptor | 8" x (3) 4" | 1 |
| 19 | JCDC1.5-20 | Inlet Adaptor Cap | 4" | 2 |
| 20 | JCDC1.5-19 | Chain | | 1 |
| 21 | 501-F109 | Switch Assembly (Index # 21-1 thru 21-9) | | 1 |
| 21-1 | JCDC2-21-1 | Switch Box – Lower Cover | | 1 |
| 21-2 | JCDC2-21-2 | Switch Box – Upper Cover | | 1 |
| 21-3 | JCDC2-21-3 | Contactor | MA-09 | 1 |
| 21-4 | JCDC2-21-4 | Remote Control Receiver | | 1 |
| 21-5 | JCDC2-21-5 | Circuit Board | | 1 |
| 21-6 | 501-O002 | Overload Protector | 5A | 1 |
| 21-7 | JCDC2-21-7 | Push Button Switch - Start | Green | 1 |
| 21-8 | JCDC2-21-8 | Emergency Stop Switch | | 1 |
| 21-9 | 5711571 | Mach Screw, Pan HD, Phillips | 3/16" x 1/4" | 1 |
| 22 | JCDC2-22 | Mach Screw, Pan HD, Phillips w/ Flange | 3/16" x 3/8" | 2 |
| 22-1 | 5513357 | Mach Screw, Pan HD, Phillips | 3/16" x 3/8" | 2 |
| 23 | 503-J337 | Power Cord | 1.5mm ² x5Cx3.6M | 1 |
| 23-1 | 501-D008 | 3PH/400V CE Plug | P-551 | 1 |
| 24 | JCDC2-24 | Side Cap | | 2 |
| 25 | 5711571 | Mach Screw, Pan HD, Phillips | 3/16" x 1/4" | 1 |
| 26 | JCDC3-26 | Connecting Square Tube | 19 x 19 x 735 | 1 |
| 27 | JCDC1.5-25 | Hex Flange Head Screw | 5/16" x 1/2" | 22 |
| 28 | JCDC1.5-24 | Tube Plug | 19 x 19 | 2 |
| 29 | JCDC3-29 | Stand - Left | | 1 |
| 30 | JCDC3-30 | Stand - Right | | 1 |
| 31 | JCDC3-31 | Base | | 1 |
| 32 | JCDC3-32 | Tube Plug | 75 x 25 | 4 |
| 33 | JCDC3-33 | Swivel Caster | Dia. 3" | 2 |
| 33-1 | JCDC3-33-1 | Swivel Caster w/ Brake | Dia. 3" | 2 |
| 34 | JCDC3-34 | Bag Frame Kit (Index # 34-1 thru # 34-5) | | 1 |
| 34-1 | JCDC3-34-1 | Hoop | 6T | 3 |
| 34-2 | JCDC3-34-2 | Bag Frame Support - Long | 7mm | 4 |

| | | | | |
|-----------|---------------------|--|----------------------------|----------|
| 34-3..... | TS-1540011 | Hex Nut..... | M3..... | 24 |
| 34-4..... | JWL1221VS-314 | Mach Screw, Pan HD, Phillips | M3 x 12 | 24 |
| 34-5..... | JCDC3-34-5 | Bag Frame Support -Short | 7mm..... | 4 |
| 35..... | 717531..... | Drum Collection Bag for JCDC-3 (pkg. of 5)..... | 980 x 1200 /mm..... | 1 |
| 36..... | JCDC2-35..... | Clamp..... | Dia. 500 mm..... | 1 |
| 37..... | TS-0050111..... | Hex Cap Screw..... | 1/4" x 2-1/2"..... | 1 |
| 38..... | JCDC2-37..... | Cyclone Funnel | | 1 |
| 39..... | JCDC1.5-36..... | Quick Lever Assembly (Index # 39-1 thru # 39-4)..... | | 2 |
| 39-1..... | JCDC1.5-36-1 | Quick Lever | | 2 |
| 39-2..... | 5712561..... | Mach Screw, Pan HD, Phillips | M5 x 8 | 8 |
| 39-3..... | TS-0570031..... | Hex Nut..... | 3/8"..... | 2 |
| 39-4..... | JCDC1.5-36-4 | Long Nut | 3/8"..... | 2 |
| 40..... | JCDC2-39..... | Foam Tape | L970 x W30 x T1 /mm | 2 |
| 41..... | JCDC2-40..... | Hose Clamp..... | 12-1/2" | 2 |
| 42..... | JCDC2-41..... | Hose..... | Dia.12" | 1 |
| 43..... | JCDC3-43..... | Collection Drum Lid | | 1 |
| 44A..... | JCDC3-44A | Collection Drum Assembly (#44 thru 50) | | 1 |
| 44..... | JCDC3-44..... | Collection Drum..... | | 1 |
| 45..... | JCDC1.5-42..... | Handle | | 1 |
| 46..... | TS-081F031 | Mach Screw, Flat HD, Phillips | 1/4" x 1/2" | 2 |
| 47..... | JCDC1.5-44..... | Rubber Pad | | 1 |
| 48..... | JCDC1.5-45..... | PC Plate..... | | 1 |
| 49..... | JCDC1.5-46..... | Rivet..... | 4-2 | 12 |
| 50..... | JCDC2-49..... | Swivel Caster | Dia. 2" | 4 |
| 51..... | SWSS3-201..... | Open End Wrench | 10-12 mm..... | 1 |
| 52..... | TS-152705..... | Hex Wrench | 4mm..... | 1 |
| 53..... | TS-152706..... | Hex Wrench | 5mm..... | 1 |
| 54..... | JCDC2-53..... | Remote Control Transmitter | RF | 1 |
| | | Battery (not shown)..... | AAA, 1.5V | 2 |
| 55..... | TS-0561021..... | Hex Nut..... | 5/16"..... | 8 |
| 56..... | JCDC3-56..... | Gasket..... | | 1 |
| 57..... | JCDC1.5-52..... | Socket HD Button Screw..... | M5 x 6 | 6 |
| 58..... | TS-0270071..... | Socket Set Screw | 5/16" x 3/4" | 1 |
| 59..... | TS-0561021..... | Hex Nut..... | 5/16"..... | 1 |
| 60A..... | JCDC1.5-55A | Handle Assembly (#60,61,62)..... | | 1 |
| 60..... | JCDC1.5-55..... | Handle | | 1 |
| 61..... | JCDC1.5-56..... | Grip..... | | 1 |
| 62..... | JCDC1.5-57..... | Pipe Plug | | 1 |
| 63..... | JCDC3-63..... | Canister Filter | | 1 |
| 64..... | JCDC1.5-59..... | Foam Tape | L1265 x W20 x T3 /mm | 1 |
| 65..... | JCDC1.5-60..... | Clamp..... | | 1 |
| 66..... | 717511..... | Canister Collection Bag for JCDC (pkg. of 5)..... | 600 x 500 /mm..... | 1 |
| 67..... | JCDC1.5-62..... | Oil-retaining Bearing | | 2 |
| 68..... | JCDC1.5-63..... | Bearing Cover | | 2 |
| 69..... | JCDC3-69..... | Shaft | | 1 |
| 70..... | JCDC1.5-65..... | Fixing Block..... | | 2 |
| 71A..... | JCDC3-71A | Scraper Assembly (#56,67 thru 75) | | 1 |
| 71..... | JCDC1.5-66..... | Scraper..... | | 6 |
| 72..... | TS-1481031..... | Hex Cap Screw..... | M5 x 12 | 16 |
| 73..... | TS-1540031..... | Hex Nut..... | M5..... | 12 |
| 74..... | JCDC1.5-69..... | Support Plate..... | | 1 |
| 75..... | 5712561..... | Mach Screw, Pan HD, Phillips | M5 x 8 | 4 |
| 76..... | JCDC1.5-71..... | Hex Flange Head Screw | 1/4" x 1/2" | 4 |
| 77..... | JCDC3-77..... | Foam Tape | L640 x W30 x T1 /mm | 1 |
| | JCDC3-HP | Hardware Package (see sect. 5.2 for contents)..... | | |

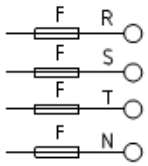
Circuit Diagram for JCDC-3.0-T Cyclone Dust Collector

JCDC-3.0-T.....717530T3~380V, 50Hz

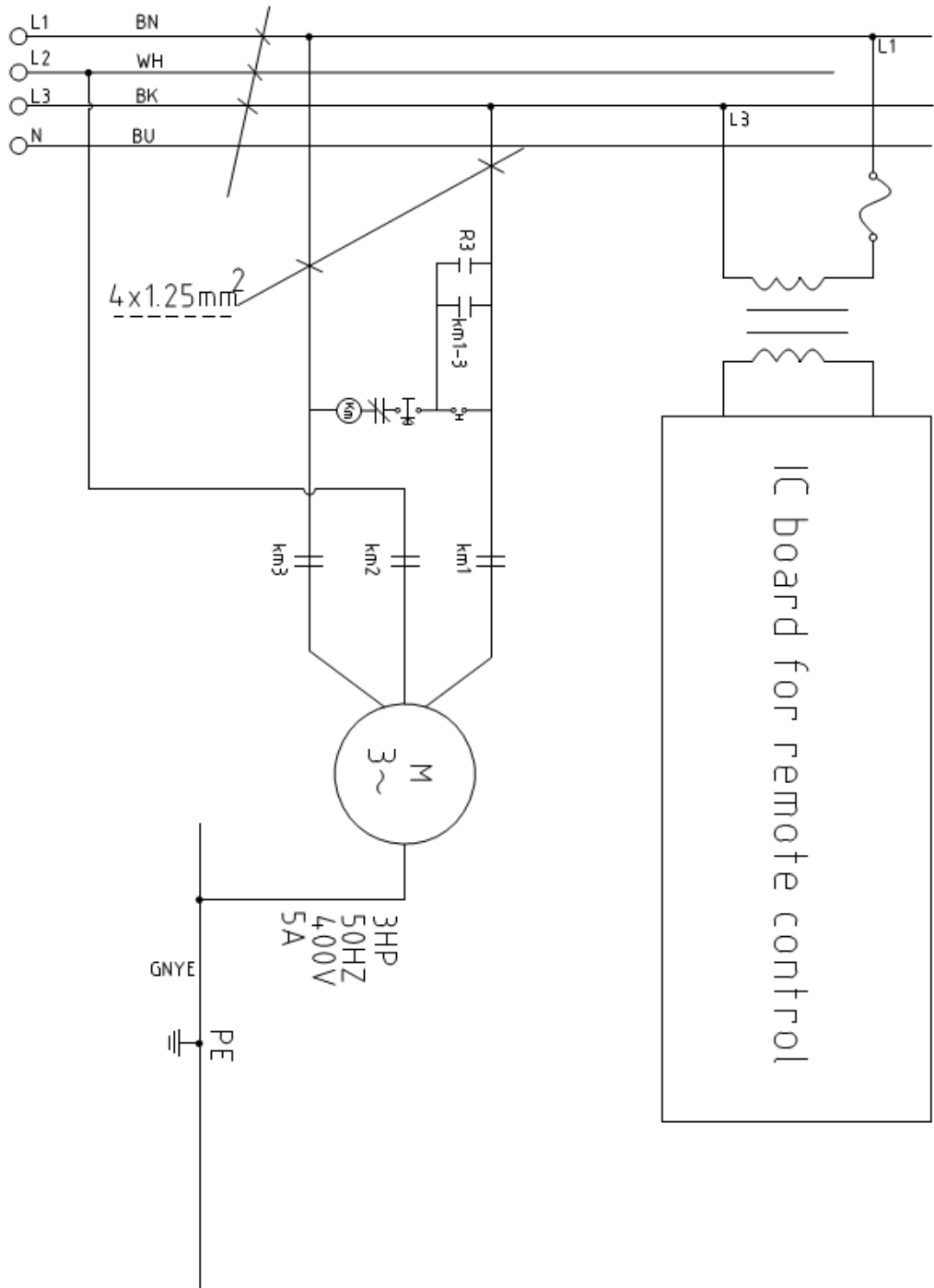


JCDC-3.0-T717530T3~400V, 50Hz

3~
50HZ
400V
30A



Limit of equipment



JET

JCDC-3.0

Fliehkraft-Staubabscheider

JCDC-3.0-T717530T3 Phasen, 400 V, 50 Hz

TEILELISTE

JPW (Tool) AG

Tämperlistr. 5

CH-8117 Fällanden

Schweiz

Telefon +41 44 806 47 48

Fax +41 44 806 47 58

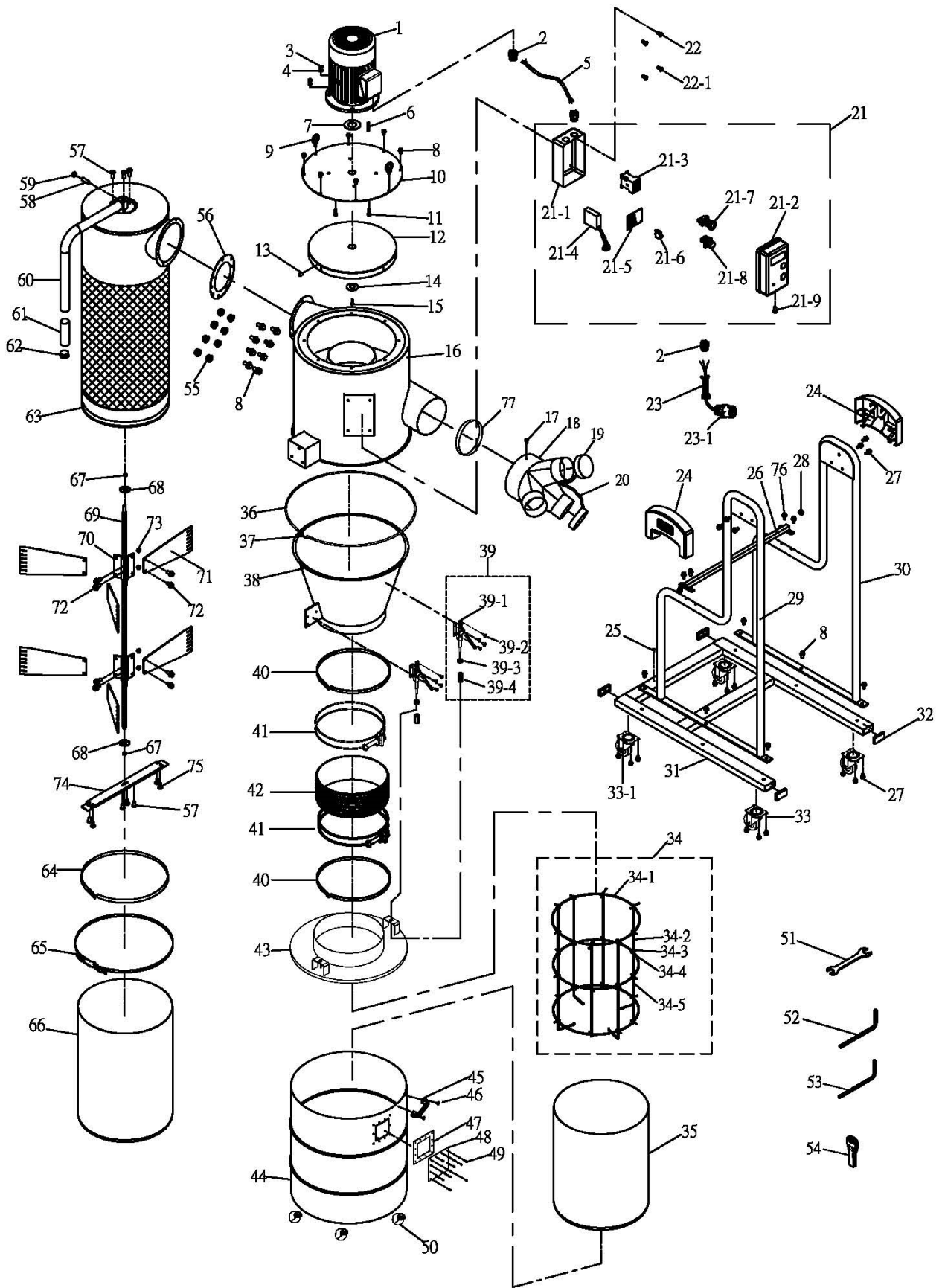
www.jettools.com

P-717530T

2016-04



Aufschlüsselung der Teile für den Fliehkraft-Staubabscheider JCDC-3.0-T



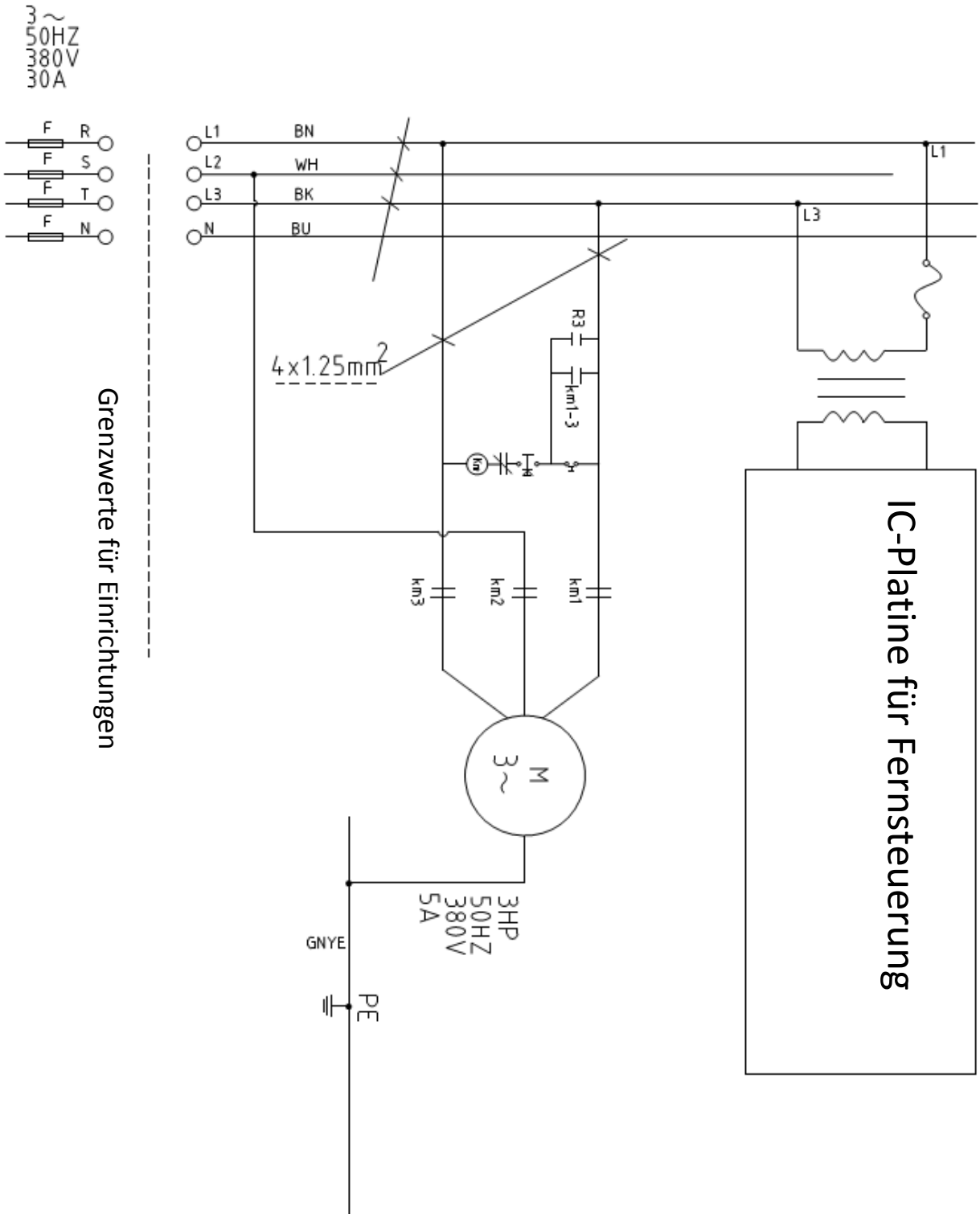
Teilleiste für den Fliehkraft-Staubabscheider JCDC-3.0-T

| Index-Nr. | Teile-Nr. | Beschreibung | Größe | Anz. |
|-----------|--------------|---|-----------------------------|------|
| 1 | 502-B868 | Motor | 3HP/380V/50HZ/3PH | 1 |
| | 502-B868 | Motor (GB) | 3HP/400V/50HZ/3PH | 1 |
| | JCDC1.5-01FC | Lüfterabdeckung (nicht gezeigt) | | 1 |
| | JCDC1.5-01CF | Kühllüfter (nicht gezeigt) | | 1 |
| 2 | JCDC1.5-02 | Zugentlastung | M20-13B/PG20 | 3 |
| 3 | TS-0570021 | Sechskantmutter | 5/16" | 4 |
| 4 | TS-0720081 | Sicherungsscheibe | 5/16" | 4 |
| 5 | 503-J343 | Motorstromkabel | 1.5mm ² x4Cx75CM | 1 |
| 6 | JCDC2-06 | Keil | 7 x 7 x 25 | 1 |
| 7 | JCDC2-07 | Gummidichtung | | 1 |
| 8 | JCDC1.5-07 | Sechskantflanschkopfschraube | 5/16" x 3/4" 20 | |
| 9 | JCDC1.5-08 | Augenschraube | 5/16" | 2 |
| 10 | JCDC3-10 | Motorplatte | | 1 |
| 11 | TS-0051051 | Sechskantschraube | 5/16" x 1" | 4 |
| 12 | JCDC3-12 | Laufрад | Dia. 15" | 1 |
| 13 | TS-0271071 | Innensechskantschraube | 3/8" x 3/4" | 1 |
| 14 | JCDC1.5-14 | Sicherungsscheibe | Exklusiv | 1 |
| 15 | JCDC1.5-15 | Innensechskantschraube (Linksgewinde) | M6 x 20 | 1 |
| 16 | JCDC3-16 | Auffangtrommel | | 1 |
| 17 | 5513357 | Maschinenschraube, Flachkopf, Kreuzschlitz | 3/16" x 3/8" | 1 |
| 18A | JCDC3-18A | Einlassadapterbaugruppe (Index-Nr. 18, 19, 20) | | 1 |
| 18 | JCDC3-18 | Einlassadapter | 8" x (3) 4" | 1 |
| 19 | JCDC1.5-20 | Einlassadapterkappe | 4" | 2 |
| 20 | JCDC1.5-19 | Kette | | 1 |
| 21 | 501-F109 | Schalterbaugruppe (Index-Nr. 21-1 bis 21-9) | | 1 |
| 21-1 | JCDC2-21-1 | Schaltkasten - untere Abdeckung | | 1 |
| 21-2 | JCDC2-21-2 | Schaltkasten - obere Abdeckung | | 1 |
| 21-3 | JCDC2-21-3 | Schütz | MA-09 | 1 |
| 21-4 | JCDC2-21-4 | Empfangsteil der Fernsteuerung | | 1 |
| 21-5 | JCDC2-21-5 | Platine | | 1 |
| 21-6 | 501-O002 | Überlastungsschutz | 5A | 1 |
| 21-7 | JCDC2-21-7 | Drucktastenschalter - für Start | Grün | 1 |
| 21-8 | JCDC2-21-8 | Not-Aus-Taster | | 1 |
| 21-9 | 5711571 | Maschinenschraube, Flachkopf, Kreuzschlitz | 3/16" x 1/4" | 1 |
| 22 | JCDC2-22 | Maschinenschraube, Flachkopf, Kreuzschlitz, mit Flansch | 3/16" x 3/8" | 2 |
| 22-1 | 5513357 | Maschinenschraube, Flachkopf, Kreuzschlitz | 3/16" x 3/8" | 2 |
| 23 | 503-J337 | Netzkabel | 1.5mm ² x5Cx3.6M | 1 |
| 23-1 | 501-D008 | 3PH/400V CE-Stecker | P-551 | 1 |
| 24 | JCDC2-24 | Seitliche Kappe | | 2 |
| 25 | 5711571 | Maschinenschraube, Flachkopf, Kreuzschlitz | 3/16" x 1/4" | 1 |
| 26 | JCDC3-26 | Anschlussrohr (Vierkant) | 19 x 19 x 735 | 1 |
| 27 | JCDC1.5-25 | Sechskantflanschkopfschraube | 5/16" x 1/2" | 22 |
| 28 | JCDC1.5-24 | Rohrstopfen | 19 x 19 | 2 |
| 29 | JCDC3-29 | Linker Ständer | | 1 |
| 30 | JCDC3-30 | Rechter Ständer | | 1 |
| 31 | JCDC3-31 | Sockel | | 1 |
| 32 | JCDC3-32 | Rohrstopfen | 75 x 25 | 4 |
| 33 | JCDC3-33 | Schwenklaufrolle | Durchmesser 3" | 2 |
| 33-1 | JCDC3-33-1 | Schwenklaufrolle mit Bremse | Durchmesser 3" | 2 |
| 34 | JCDC3-34 | Beutelrahmensatz (Index-Nr. 34-1 bis 34-5) | | 1 |
| 34-1 | JCDC3-34-1 | Bügel | 6T | 3 |
| 34-2 | JCDC3-34-2 | Lange Beutelrahmenstützstrebe | 7 mm | 4 |

| | | | | |
|-----------|---------------------|---|----------------------------|----------|
| 34-3..... | TS-1540011 | Sechskantmutter | M3..... | 24 |
| 34-4..... | JWL1221VS-314 | Maschinenschraube, Flachkopf, Kreuzschlitz | M3 x 12 | 24 |
| 34-5..... | JCDC3-34-5 | Kurze Beutelrahmenstützstrebe..... | 7 mm..... | 4 |
| 35..... | 717531..... | Trommel-Auffangbeutel für JCDC-3 (Paket mit 5 Stück)..... | 980 x 1200 /mm..... | 1 |
| 36..... | JCDC2-35..... | Klammer | Durchmesser 500 mm..... | 1 |
| 37..... | TS-0050111..... | Sechskantschraube..... | 1/4" x 2-1/2" | 1 |
| 38..... | JCDC2-37..... | Zyklontrichter | | 1 |
| 39..... | JCDC1.5-36..... | Schnellklemmhebelbaugruppe (Index-Nr. 39-1 bis 39-4)..... | | 2 |
| 39-1..... | JCDC1.5-36-1 | Schnellklemmhebel | | 2 |
| 39-2..... | 5712561..... | Maschinenschraube, Flachkopf, Kreuzschlitz | M5 x 8 | 8 |
| 39-3..... | TS-0570031..... | Sechskantmutter | 3/8" | 2 |
| 39-4..... | JCDC1.5-36-4 | Lange Mutter..... | 3/8" | 2 |
| 40..... | JCDC2-39..... | Schaumstoffklebeband..... | L970 x W30 x T1 /mm | 2 |
| 41..... | JCDC2-40..... | Schlauchselle | 12-1/2" | 2 |
| 42..... | JCDC2-41..... | Schlauch..... | Durchmesser 12" | 1 |
| 43..... | JCDC3-43..... | Auffangtrommeldeckel..... | | 1 |
| 44A..... | JCDC3-44A | Auffangtrommelbaugruppe (Nr. 44 - 50) | | 1 |
| 44..... | JCDC3-44..... | Auffangtrommel | | 1 |
| 45..... | JCDC1.5-42..... | Stange..... | | 1 |
| 46..... | TS-081F031 | Maschinenschraube, Flachkopf, Kreuzschlitz | 1/4" x 1/2" | 2 |
| 47..... | JCDC1.5-44..... | Gummiunterlage | | 1 |
| 48..... | JCDC1.5-45..... | PC-Platte | | 1 |
| 49..... | JCDC1.5-46..... | Niet | 4-2 | 12 |
| 50..... | JCDC2-49..... | Schwenklaufrolle | Durchmesser 2" | 4 |
| 51..... | SWSS3-201..... | Maulschlüssel | 10-12 mm..... | 1 |
| 52..... | TS-152705 | Sechskantschlüssel | 4 mm | 1 |
| 53..... | TS-152706 | Sechskantschlüssel | 5 mm | 1 |
| 54..... | JCDC2-53..... | Sendeteil der Fernsteuerung | RF | 1 |
| | | Batterie (nicht dargestellt) | AAA, 1.5V | 2 |
| 55..... | TS-0561021..... | Sechskantmutter | 5/16" | 8 |
| 56..... | JCDC3-56..... | Dichtung | | 1 |
| 57..... | JCDC1.5-52..... | Innensechskantknopfschraube..... | M5 x 6 | 6 |
| 58..... | TS-0270071..... | Innensechskantschraube..... | 5/16" x 3/4" | 1 |
| 59..... | TS-0561021..... | Sechskantmutter | 5/16" | 1 |
| 60A..... | JCDC1.5-55A | Griffstangeneinheit (Nr. 60, 61, 62) | | 1 |
| 60..... | JCDC1.5-55..... | Stange..... | | 1 |
| 61..... | JCDC1.5-56..... | Griff..... | | 1 |
| 62..... | JCDC1.5-57..... | Rohrstopfen..... | | 1 |
| 63..... | JCDC3-63..... | Topffilter..... | | 1 |
| 64..... | JCDC1.5-59..... | Schaumstoffklebeband..... | L1265 x B20 x T3 /mm | 1 |
| 65..... | JCDC1.5-60..... | Klammer | | 1 |
| 66..... | 717511..... | Topf-Auffangbeutel für JCDC (Paket mit 5 Stück)..... | 600 x 500 /mm..... | 1 |
| 67..... | JCDC1.5-62..... | Ölrückhaltering..... | | 2 |
| 68..... | JCDC1.5-63..... | Lagerdeckel..... | | 2 |
| 69..... | JCDC3-69..... | Welle | | 1 |
| 70..... | JCDC1.5-65..... | Befestigungsblock..... | | 2 |
| 71A..... | JCDC3-71A | Absteiferbaugruppe (Nr. 56, 67 bis 75) | | 1 |
| 71..... | JCDC1.5-66..... | Abstreifer..... | | 6 |
| 72..... | TS-1481031..... | Sechskantschraube..... | M5 x 12 | 16 |
| 73..... | TS-1540031..... | Sechskantmutter | M5..... | 12 |
| 74..... | JCDC1.5-69..... | Tragplatte | | 1 |
| 75..... | 5712561..... | Maschinenschraube, Flachkopf, Kreuzschlitz | M5 x 8 | 4 |
| 76..... | JCDC1.5-71..... | Sechskantflanschkopfschraube | 1/4" x 1/2" | 4 |
| 77..... | JCDC3-77..... | Schaumstoffklebeband..... | L640 x B30 x T1 /mm | 1 |
| | JCDC3-HP | Hardwarepaket (Inhalt siehe 5.2)..... | | |

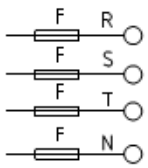
Verdrahtungsplan für Fliehkraft-Staubabscheider JCDC-3.0-T

JCDC-3.0-T.....717530T3 Phasen, 50 Hz

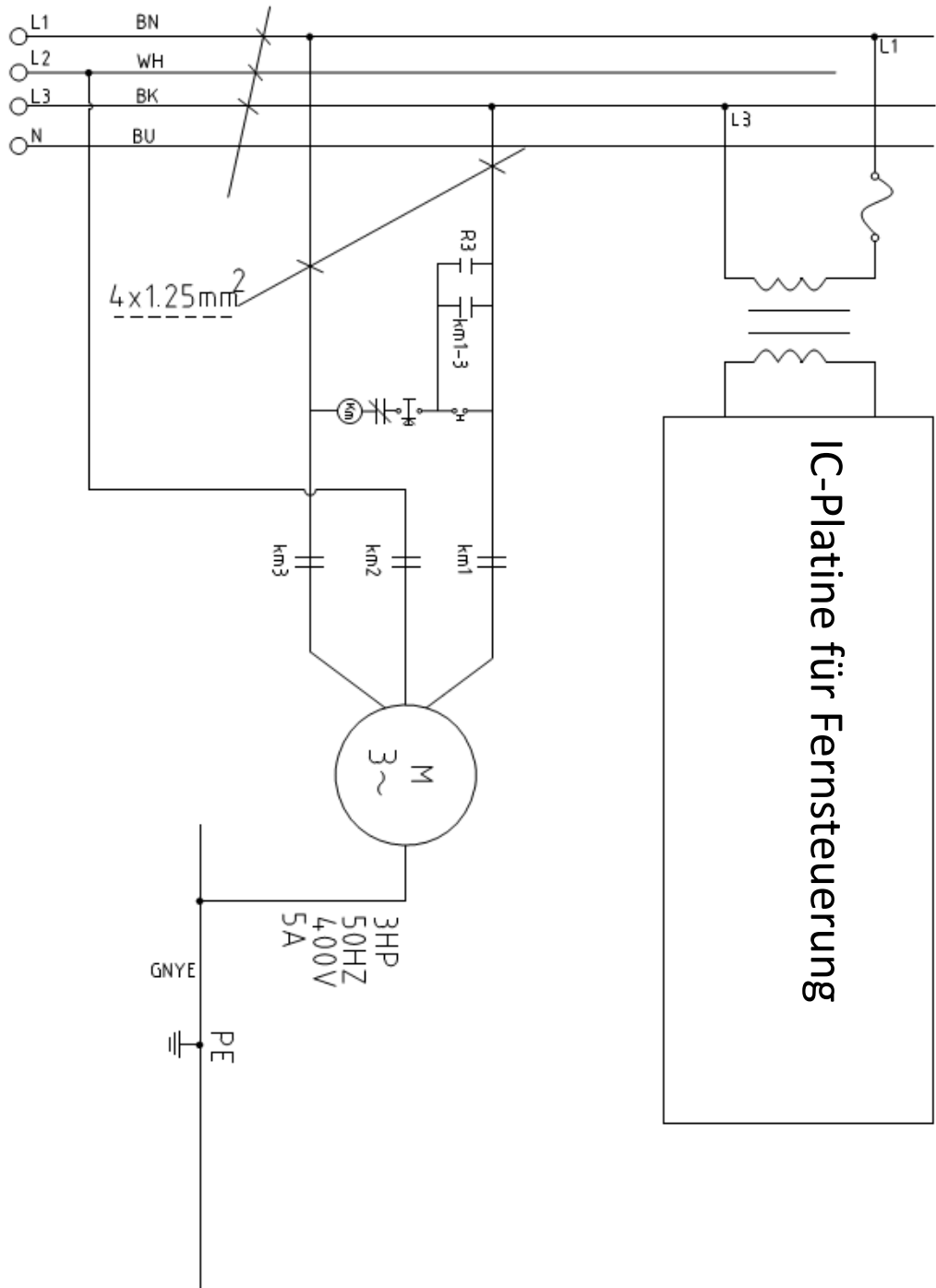


JCDC-3.0-T717530T3 Phasen, 400 V, 50 Hz

3 ~
50HZ
400V
30A



Grenzwerte für Einrichtungen



JET

JCDC-3.0

Collecteur de poussière cyclonique

JCDC-3.0-T717530T3~400V, 50Hz

LISTE DE PIECES

JPW (Tool) AG
Tämperlistr. 5
CH-8117 Fällanden
Suisse
Téléphone +41 44 806 47 48
Fax +41 44 806 47 58

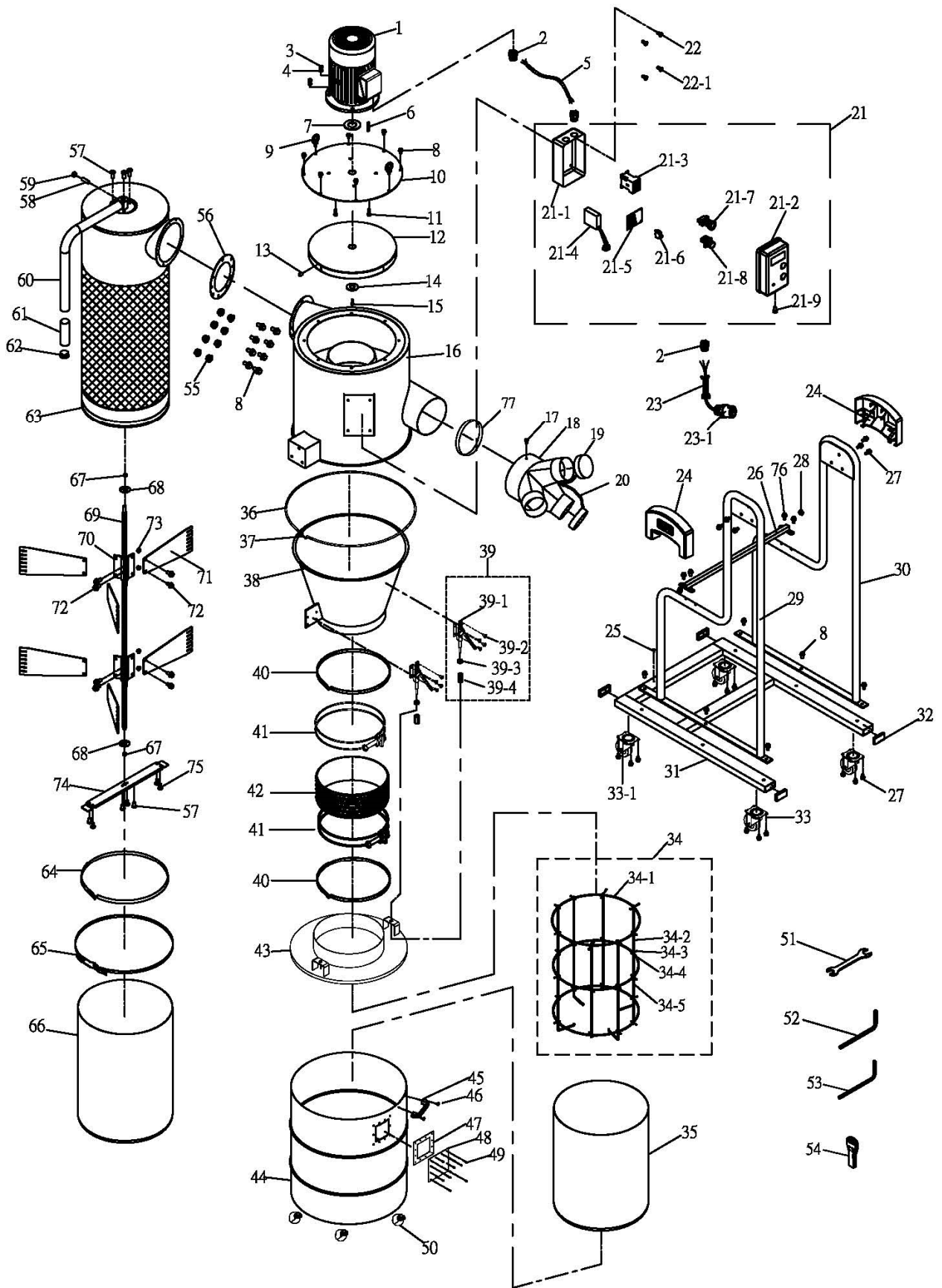
www.jettools.com

P-717530T

2016-04



Défaillance des pièces du collecteur de poussière cyclonique JCDC-3.0-T



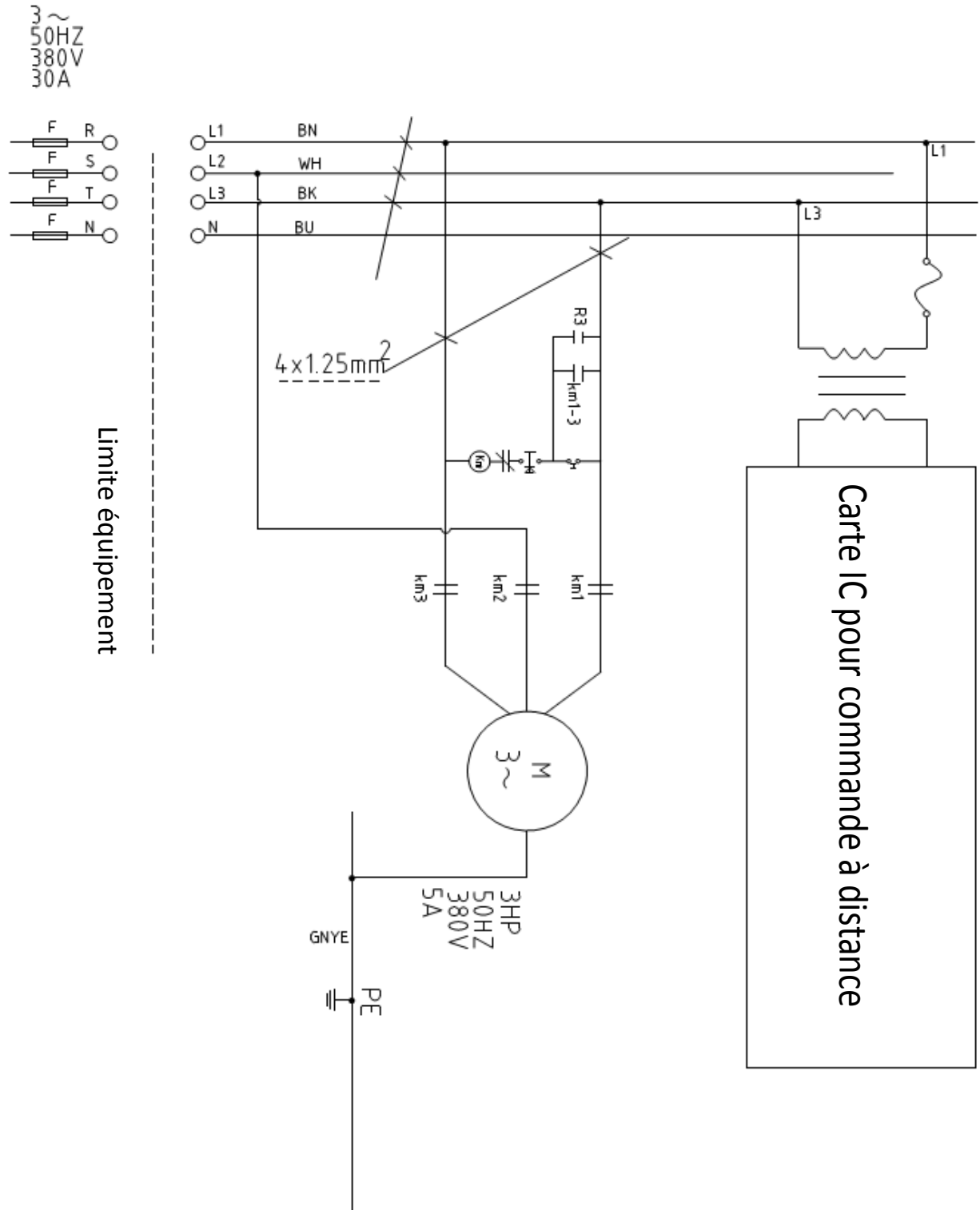
Liste de pièces du collecteur de poussière cyclonique JCDC-3.0-T

| N° d'index. | N° de pièce. | Description | Taille | Qté |
|-------------|-------------------|--|----------------------------------|-----|
| 1..... | 502-B868..... | Moteur | 3HP/380V/50HZ/3PH..... | 1 |
| | 502-B868..... | Moteur (UK)..... | 3HP/400V/50HZ/3PH..... | 1 |
| | JCDC1.5-01FC..... | Couvercle du ventilateur (non indiqué)..... | | 1 |
| | JCDC1.5-01CF..... | Ventilateur de refroidissement (non indiqué)..... | | 1 |
| 2..... | JCDC1.5-02..... | Décharge de traction..... | M20-13B/PG20..... | 3 |
| 3..... | TS-0570021..... | Ecrou hexagonal..... | 5/16"..... | 4 |
| 4..... | TS-0720081..... | Rondelle de verrouillage..... | 5/16"..... | 4 |
| 5..... | 503-J343..... | Cordon moteur..... | 1,5mm ² x4Cx75CM..... | 1 |
| 6..... | JCDC2-06..... | Clavette..... | 7 x 7 x 25..... | 1 |
| 7..... | JCDC2-07..... | Joint en caoutchouc..... | | 1 |
| 8..... | JCDC1.5-07..... | Vis à bride à tête hexagonale..... | 5/16" x 3/4"..... | 20 |
| 9..... | JCDC1.5-08..... | Boulon à oeillet..... | 5/16"..... | 2 |
| 10..... | JCDC3-10..... | Plaque du moteur..... | | 1 |
| 11..... | TS-0051051..... | Vis à tête hexagonale..... | 5/16" x 1"..... | 4 |
| 12..... | JCDC3-12..... | Roue du ventilateur..... | Dia. 15"..... | 1 |
| 13..... | TS-0271071..... | Vis de réglage à douille..... | 3/8" x 3/4"..... | 1 |
| 14..... | JCDC1.5-14..... | Rondelle de verrouillage..... | Exclusif..... | 1 |
| 15..... | JCDC1.5-15..... | Vis à tête à six pans creux (filetage gauche)..... | M6 x 20..... | 1 |
| 16..... | JCDC3-16..... | Cylindre d'admission..... | | 1 |
| 17..... | 5513357..... | Vis Mach, à tête cylindrique, Phillips..... | 3/16" x 3/8"..... | 1 |
| 18A..... | JCDC3-18A..... | Adaptateur d'admission (Index #18, 19, 20)..... | | 1 |
| 18..... | JCDC3-18..... | Adaptateur d'admission..... | 8" x (3) 4"..... | 1 |
| 19..... | JCDC1.5-20..... | Bouchon d'adaptateur d'admission..... | 4"..... | 2 |
| 20..... | JCDC1.5-19..... | Chaîne..... | | 1 |
| 21..... | 501-F109..... | Interrupteur (Index # 21-1 à 21-9)..... | | 1 |
| 21-1..... | JCDC2-21-1..... | Boîtier de l'interrupteur – Couvercle inférieur..... | | 1 |
| 21-2..... | JCDC2-21-2..... | Boîtier de l'interrupteur – Couvercle supérieur..... | | 1 |
| 21-3..... | JCDC2-21-3..... | Contacteur..... | MA-09..... | 1 |
| 21-4..... | JCDC2-21-4..... | Récepteur de commande à distance..... | | 1 |
| 21-5..... | JCDC2-21-5..... | Circuit imprimé..... | | 1 |
| 21-6..... | 501-O002..... | Protection contre la surcharge..... | 5A..... | 1 |
| 21-7..... | JCDC2-21-7..... | Interrupteur de bouton-poussoir - Démarrage..... | Vert..... | 1 |
| 21-8..... | JCDC2-21-8..... | Commutateur d'arrêt d'urgence..... | | 1 |
| 21-9..... | 5711571..... | Vis Mach, à tête cylindrique, Phillips..... | 3/16" x 1/4"..... | 1 |
| 22..... | JCDC2-22..... | Vis Mach, à tête cylindrique, Phillips avec bride..... | 3/16" x 3/8"..... | 2 |
| 22-1..... | 5513357..... | Vis Mach, à tête cylindrique, Phillips..... | 3/16" x 3/8"..... | 2 |
| 23..... | 503-J337..... | Cordon électrique..... | 1,5mm ² x5Cx3.6M..... | 1 |
| 23-1..... | 501-D008..... | Fiche 3PH/400V CE..... | P-551..... | 1 |
| 24..... | JCDC2-24..... | Bouchon latéral..... | | 2 |
| 25..... | 5711571..... | Vis Mach, à tête cylindrique, Phillips..... | 3/16" x 1/4"..... | 1 |
| 26..... | JCDC3-26..... | Tube carré de connexion..... | 19 x 19 x 735..... | 1 |
| 27..... | JCDC1.5-25..... | Vis à bride à tête hexagonale..... | 5/16" x 1/2"..... | 22 |
| 28..... | JCDC1.5-24..... | Fiche du tuyau..... | 19 x 19..... | 2 |
| 29..... | JCDC3-29..... | Montant gauche..... | | 1 |
| 30..... | JCDC3-30..... | Montant droit..... | | 1 |
| 31..... | JCDC3-31..... | Base..... | | 1 |
| 32..... | JCDC3-32..... | Fiche du tuyau..... | 75 x 25..... | 4 |
| 33..... | JCDC3-33..... | Roulette oscillante..... | Dia. 3"..... | 2 |
| 33-1..... | JCDC3-33-1..... | Roulette oscillante avec frein..... | Dia. 3"..... | 2 |
| 34..... | JCDC3-34..... | Kit de cadre du sac (Index # 34-1 à # 34-5)..... | | 1 |
| 34-1..... | JCDC3-34-1..... | Arceau..... | 6T..... | 3 |
| 34-2..... | JCDC3-34-2..... | Support de cadre du sac - Long..... | 7mm..... | 4 |

| | | | | |
|-----------|---------------------|---|----------------------------|----------|
| 34-3..... | TS-1540011 | Ecrou hexagonal | M3..... | 24 |
| 34-4..... | JWL1221VS-314 | Vis Mach, à tête cylindrique, Phillips..... | M3 x 12 | 24 |
| 34-5..... | JCDC3-34-5..... | Support de cadre du sac - Court | 7mm..... | 4 |
| 35..... | 717531..... | Sac de collecte du cylindre pour JCDC-3 (pack de 5) ... | 980 x 1200 /mm | 1 |
| 36..... | JCDC2-35..... | Serrage | Dia. 500 mm..... | 1 |
| 37..... | TS-0050111..... | Vis à tête hexagonale | 1/4" x 2-1/2" | 1 |
| 38..... | JCDC2-37..... | Entonnoir cyclonique..... | | 1 |
| 39..... | JCDC1.5-36..... | Levier rapide (Index # 39-1 à # 39-4)..... | | 2 |
| 39-1..... | JCDC1.5-36-1..... | Levier rapide..... | | 2 |
| 39-2..... | 5712561..... | Vis Mach, à tête cylindrique, Phillips..... | M5 x 8 | 8 |
| 39-3..... | TS-0570031..... | Ecrou hexagonal | 3/8" | 2 |
| 39-4..... | JCDC1.5-36-4..... | Ecrou long..... | 3/8" | 2 |
| 40..... | JCDC2-39..... | Ruban en mousse | L970 x W30 x T1 /mm | 2 |
| 41..... | JCDC2-40..... | Collier de serrage pour tuyaux | 12-1/2" | 2 |
| 42..... | JCDC2-41..... | Flexible | Dia. 12" | 1 |
| 43..... | JCDC3-43..... | Lèvre du cylindre de collecte | | 1 |
| 44A..... | JCDC3-44A | Cylindre de collecte (#44 à 50) | | 1 |
| 44..... | JCDC3-44..... | Cylindre de collecte | | 1 |
| 45..... | JCDC1.5-42..... | Poignée..... | | 1 |
| 46..... | TS-081F031 | Vis Mach, à tête plate, Phillips | 1/4" x 1/2" | 2 |
| 47..... | JCDC1.5-44..... | Coussin de caoutchouc..... | | 1 |
| 48..... | JCDC1.5-45..... | Plaque PC..... | | 1 |
| 49..... | JCDC1.5-46..... | Rivet..... | 4-2 | 12 |
| 50..... | JCDC2-49..... | Roulette oscillante..... | Dia. 2" | 4 |
| 51..... | SWSS3-201..... | Clé plate..... | 10-12 mm..... | 1 |
| 52..... | TS-152705 | Clé hexagonale | 4mm..... | 1 |
| 53..... | TS-152706 | Clé hexagonale | 5mm..... | 1 |
| 54..... | JCDC2-53..... | Emetteur de commande à distance | RF | 1 |
| | | Batterie (non indiqué) | AAA, 1,5V | 2 |
| 55..... | TS-0561021..... | Ecrou hexagonal | 5/16" | 8 |
| 56..... | JCDC3-56..... | Joint d'étanchéité | | 1 |
| 57..... | JCDC1.5-52..... | Vis à six pans creux | M5 x 6 | 6 |
| 58..... | TS-0270071 | Vis de réglage à douille..... | 5/16" x 3/4" | 1 |
| 59..... | TS-0561021 | Ecrou hexagonal | 5/16" | 1 |
| 60A..... | JCDC1.5-55A | Poignée (#60, 61, 62)..... | | 1 |
| 60..... | JCDC1.5-55..... | Poignée | | 1 |
| 61..... | JCDC1.5-56..... | Poignée..... | | 1 |
| 62..... | JCDC1.5-57..... | Bouchon du tuyau | | 1 |
| 63..... | JCDC3-63..... | Filtre de la boîte..... | | 1 |
| 64..... | JCDC1.5-59..... | Ruban en mousse | L1265 x W20 x T3 /mm | 1 |
| 65..... | JCDC1.5-60..... | Serrage | | 1 |
| 66..... | 717511..... | Sac de collecte de la boîte pour JCDC (pack de 5) | 600 x 500 /mm | 1 |
| 67..... | JCDC1.5-62..... | Palier de retenue d'huile | | 2 |
| 68..... | JCDC1.5-63..... | Chapeau de palier..... | | 2 |
| 69..... | JCDC3-69..... | Arbre | | 1 |
| 70..... | JCDC1.5-65..... | Bloc de fixation | | 2 |
| 71A..... | JCDC3-71A | Raclair (#56,67 à 75)..... | | 1 |
| 71..... | JCDC1.5-66..... | Raclair..... | | 6 |
| 72..... | TS-1481031..... | Vis à tête hexagonale | M5 x 12 | 16 |
| 73..... | TS-1540031..... | Ecrou hexagonal | M5..... | 12 |
| 74..... | JCDC1.5-69..... | Plaque de support | | 1 |
| 75..... | 5712561..... | Vis Mach, à tête cylindrique, Phillips..... | M5 x 8 | 4 |
| 76..... | JCDC1.5-71..... | Vis à bride à tête hexagonale | 1/4" x 1/2" | 4 |
| 77..... | JCDC3-77..... | Ruban en mousse | L640 x W30 x T1 /mm | 1 |
| | JCDC3-HP | Emballage du matériel (voir chap. 5.2 concernant les contenus)..... | | |

Schéma du circuit du collecteur de poussière cyclonique JCDC-3.0-T

JCDC-3.0-T.....717530T3~380V, 50Hz



JCDC-3.0-T717530T3~400V, 50Hz

