



JSMS-10L

Slide Miter Saw

10000826M ~230V 50Hz

PARTS LIST



TOOL FRANCE SARL

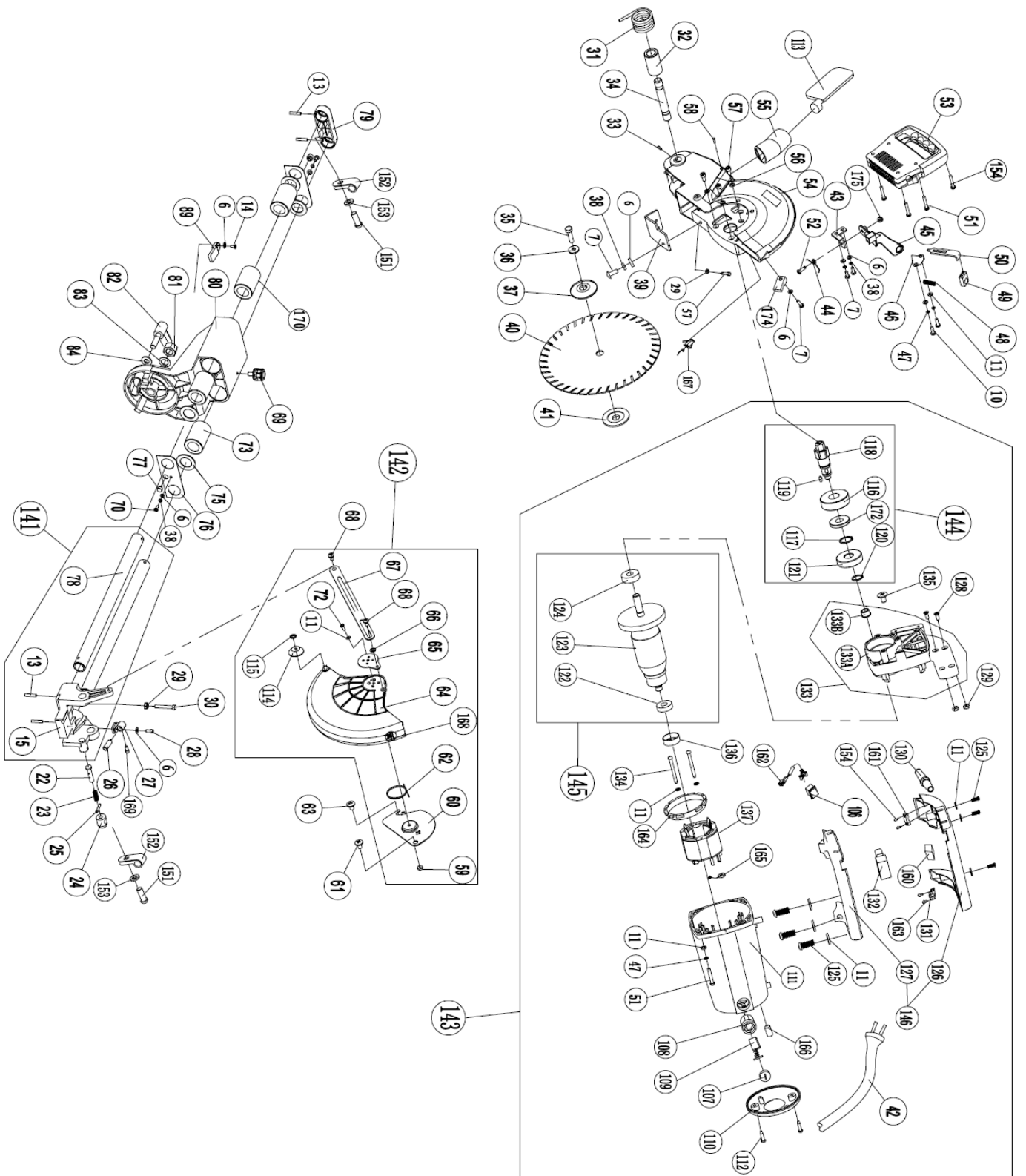
9 Rue des Pyrénées, 91090 Lisses, France

www.jettools.com

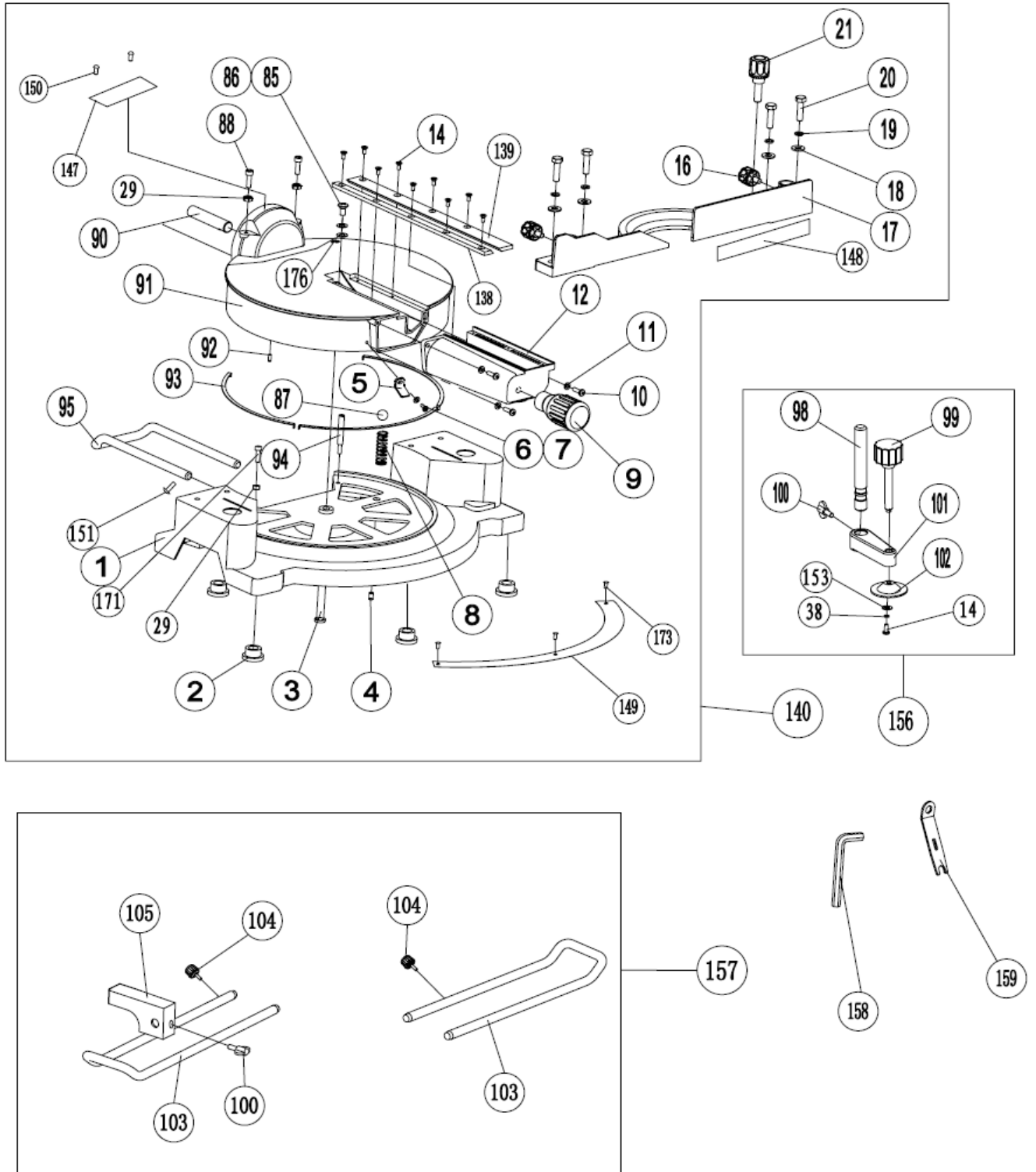
P-10000826M

2019-03

Parts Breakdown for JSMS-10L Slide Miter Saw



Parts Breakdown for JSMS-10L Slide Miter Saw



Parts List for JSMS-10L Slide Miter Saw

Index No.	Part No.	Description	Size	Qty.
1	JSMS10L -001	Base		1
2	JSMS10L -002	Rubber feet		5
3	JSMS10L -003	Position shaft		1
4	JSMS10L -004	Screw	M10x10	1
5	JSMS10L -005	Indicator		1
6	JSMS10L -006	Flat washer	4	9
7	JSMS10L -007	Screw	M4x15	6
8	JSMS10L -008	Compress spring		1
9	JSMS10L -009	Miter knob		1
10	JSMS10L -010	Screw	M5x15	5
11	JSMS10L -011	Flat washer	5	18
12	JSMS10L -012	Sleeve		1
13	JSMS10L -013	Spring pin	5x10	4
14	JSMS10L -014	Screw	M4x10	12
15	JSMS10L -015	Body support		1
16	JSMS10L -016	Knob		2
17	JSMS10L -017	Fence		1
18	JSMS10L -018	Flat washer	8	4
19	JSMS10L -019	Spring washer	8	4
20	JSMS10L -020	Hex bolt	M8x30	4
21	JSMS10L -021	Adjustable knob		1
22	JSMS10L -022	Pin		1
23	JSMS10L -023	Compression spring		1
24	JSMS10L -024	Pin cap		1
25	JSMS10L -025	Spring pin	3x15	1
26	JSMS10L -026	Laser		1
27	JSMS10L -027	Laser holder		1
28	JSMS10L -028	Hex bolt	M4x10	1
29	JSMS10L -029	Hex nut	M6	4
30	JSMS10L -030	Hex bolt	M6x40	1
31	JSMS10L -031	Torque spring		1
32	JSMS10L -032	Sleeve		1
33	JSMS10L -033	Screw	M5x10	2
34	JSMS10L -034	Pin shaft		1
35	JSMS10L -035	Hex bolt	M8x25	1
36	JSMS10L -036	Washer		1
37	JSMS10L -037	Out flange		1
38	JSMS10L -038	Spring washer	4	6
39	JSMS10L -039	Guard		1
40	JSMS10L -040	Saw blade		1
41	JSMS10L -041	Inner flange		1
42	JSMS10L -042	Power cord		1
43	JSMS10L -043	Fix plate		1
44	JSMS10L -044	Torque spring		1
45	JSMS10L -045	Safety plate		1
46	JSMS10L -046	Cover		1
47	JSMS10L -047	Spring washer	5	8
48	JSMS10L -048	Spring		1
49	JSMS10L -049	Shaft lock cap		1
50	JSMS10L -050	Shaft lock		1
51	JSMS10L -051	Screw	M5x30	8
52	JSMS10L -052	Screw	M4X14	1
53	JSMS10L -053	Handle		1
54	JSMS10L -054	Blade case		1
55	JSMS10L -055	Dust port		1
56	JSMS10L -056	Spring washer	6	3
57	JSMS10L -057	Screw	M6x20	3
58	JSMS10L -058	Tapping screw	M4x52	1
59	JSMS10L -059	Nut	M5	1
60	JSMS10L -060	Fix plate		1
61	JSMS10L -061	Screw		1
62	JSMS10L -062	Torque spring		1
63	JSMS10L -063	Screw		1
64	JSMS10L -064	Movable guard		1
65	JSMS10L -065	Center plate		1
66	JSMS10L -066	Washer		1
67	JSMS10L -067	Rod		1
68	JSMS10L -068	Screw		2

Parts List for JSMS-10L Slide Miter Saw

Index No.	Part No.	Description	Size	Qty.
69	JSMS10L -069	Knob		1
70	JSMS10L -070	Screw	M4x10	2
71	JSMS10L-071	*Removed*		
72	JSMS10L-072	Screw	M5x15	1
73	JSMS10L -073	Linear bearing	LM25UU	3
74	JSMS10L-074	*Removed*		
75	JSMS10L -075	Wool felt		4
76	JSMS10L -076	Plate		2
77	JSMS10L -077	Pin		2
78	JSMS10L -078	Sliding bar		2
79	JSMS10L -079	Joint holder		1
80	JSMS10L -080	Pivot		1
81	JSMS10L -081	Nut	M16	1
82	JSMS10L -082	Bevel knob		1
83	JSMS10L -083	Flat washer	16	1
84	JSMS10L -084	Flat washer	10	1
85	JSMS10L -085	Washer	6	1
86	JSMS10L -086	Screw	M6	1
87	JSMS10L -087	Steel ball	φ8	1
88	JSMS10L -088	Screw	M6x35	2
89	JSMS10L -089	Indicator		1
90	JSMS10L -090	Shaft		1
91	JSMS10L -091	Work table		1
92	JSMS10L -092	Screw	M6x15	1
93	JSMS10L -093	Steel C-washer		3
94	JSMS10L -094	Screw		1
95	JSMS10L -095	Support		1
96	JSMS10L -096	*Removed*		
97	JSMS10L -097	*Removed*		
98	JSMS10L -098	Pole		1
99	JSMS10L -099	Knob		1
100	JSMS10L -100	Butterfly knob		2
101	JSMS10L -101	Pole holder		1
102	JSMS10L -102	Clamp plate		1
103	JSMS10L -103	Extension wing		2
104	JSMS10L -104	Knob		2
105	JSMS10L -105	Fence		1
106	JSMS10L -106	Laser switch		1
107	JSMS10L -107	Carbon brush cap		2
108	JSMS10L -108	Brush holder		2
109	JSMS10L -109	Carbon brush		2
110	JSMS10L -110	Motor rear cover		1
111	JSMS10L -111	Motor housing		1
112	JSMS10L -112	Tapping screw	ST4.2x10	2
113	JSMS10L -113	Dust bag		1
114	JSMS10L -114	Roller		1
115	JSMS10L -115	Clip		1
116	JSMS10L -116	Bearing	6304 - 2R7	1
117	JSMS10L -117	Retainer	φ20	1
118	JSMS10L -118	Spindle		1
119	JSMS10L -119	Key	5x10	1
120	JSMS10L -120	Retainer	φ16	1
121	JSMS10L -121	Gear		1
122	JSMS10L -122	Bearing	6200	1
123	JSMS10L -123	Rotor		1
124	JSMS10L -124	Bearing	6201	1
125	JSMS10L -125	Tapping screw	ST4.2x18	6
126	JSMS10L -126	Handle upper cover		1
127	JSMS10L -127	Handle lower cover		1
128	JSMS10L -128	Screw	M5x10	4
129	JSMS10L -129	Nut	M5	4
130	JSMS10L -130	Power cord sleeve		1
131	JSMS10L -131	Transformer		1
132	JSMS10L -132	Switch		1
133	JSMS10L -133	Gear box assembly (#133A and 133B)		1
133A	JSMS10L -133A	Gear box **** (Delivery only assembly)		1
133B	JSMS10L -133B	Oilless bearing*** (Delivery only assembly)		1
134	JSMS10L -134	Screw	M5x70	2

Parts List for JSMS-10L Slide Mitre Saw

Index No.	Part No.	Description	Size	Qty.
135	JSMS10L -135	Screw		1
136	JSMS10L -136	Anti-vibration cover		1
137	JSMS10L -137	Stator		1
138	JSMS10L -138	Left table insert		1
139	JSMS10L -139	Right table insert		1
140	JSMS10L -140	Base assembly(#1 thru21,#85 thru 173)		1
141	JSMS10L -141	Body support assembly(#13,15,78)		1
142	JSMS10L -142	Movable guard assembly(#59 thru72,#114,115)		1
143	JSMS10L -143	Motor complete assembly(#106 thru 172)	230V	1
144	JSMS10L -144	Spindle assembly(#116 thru 120,172)		1
145	JSMS10L -145	Rotor assembly(#122 thru124)		1
146	JSMS10L -146	Handle assembly (#126 and 127)		1
147	JSMS10L -147	Bevel scale		1
148	JSMS10L -148	Length scale		1
149	JSMS10L -149	Miter scale		1
150	JSMS10L -150	Rivet	Ø2x3	2
151	JSMS10L -151	Screw	M4x10	4
152	JSMS10L -152	Clip		2
153	JSMS10L -153	Big washer	4	3
154	JSMS10L -154	Tapping screw	ST4.2x12	6
155	JSMS10L -155	*Removed*		
156	JSMS10L -156	Clamp assembly(#99 thru102,#153,14,38)		1
157	JSMS10L -157	Extension wing assembly(#103 thru105,#100)		1
158	JSMS10L -158	Wrench	3	1
159	JSMS10L -159	Wrench		1
160	JSMS10L -160	Capacitor	CB244-B	1
161	JSMS10L -161	Strain relief		1
162	JSMS10L -162	Wire clip(A) assembly		1
163	JSMS10L -163	Tapping screw	ST2.9x8	2
164	JSMS10L -164	Baffle plate		1
165	JSMS10L -165	Magnet ring Assembly	Ø8	2
166	JSMS10L -166	Screw	M5x10	2
167	JSMS10L -167	Wire clip(B) assembly		1
168	JSMS10L -168	Warning label		1
169	JSMS10L -169	Hex bolt	M4x6	1
170	JSMS10L -170	Bearing bush		1
171	JSMS10L -171	Hex bolt	M6x25	1
172	JSMS10L -172	Graphite washer		1
173	JSMS10L -173	Rivet		3
174	JSMS10L -174	Clamp		1
175	JSMS10L -175	Lock Nut	M4	1
176	JSMS10L -176	Washer		1

Wiring Diagram for JSMS-10L Slide Mitre Saw

10000826M..... ~ 230V, 50Hz

