



JTS-315LA

Table Saw

10001910AM ~230V 50Hz

PARTS LIST

TOOL FRANCE SARL

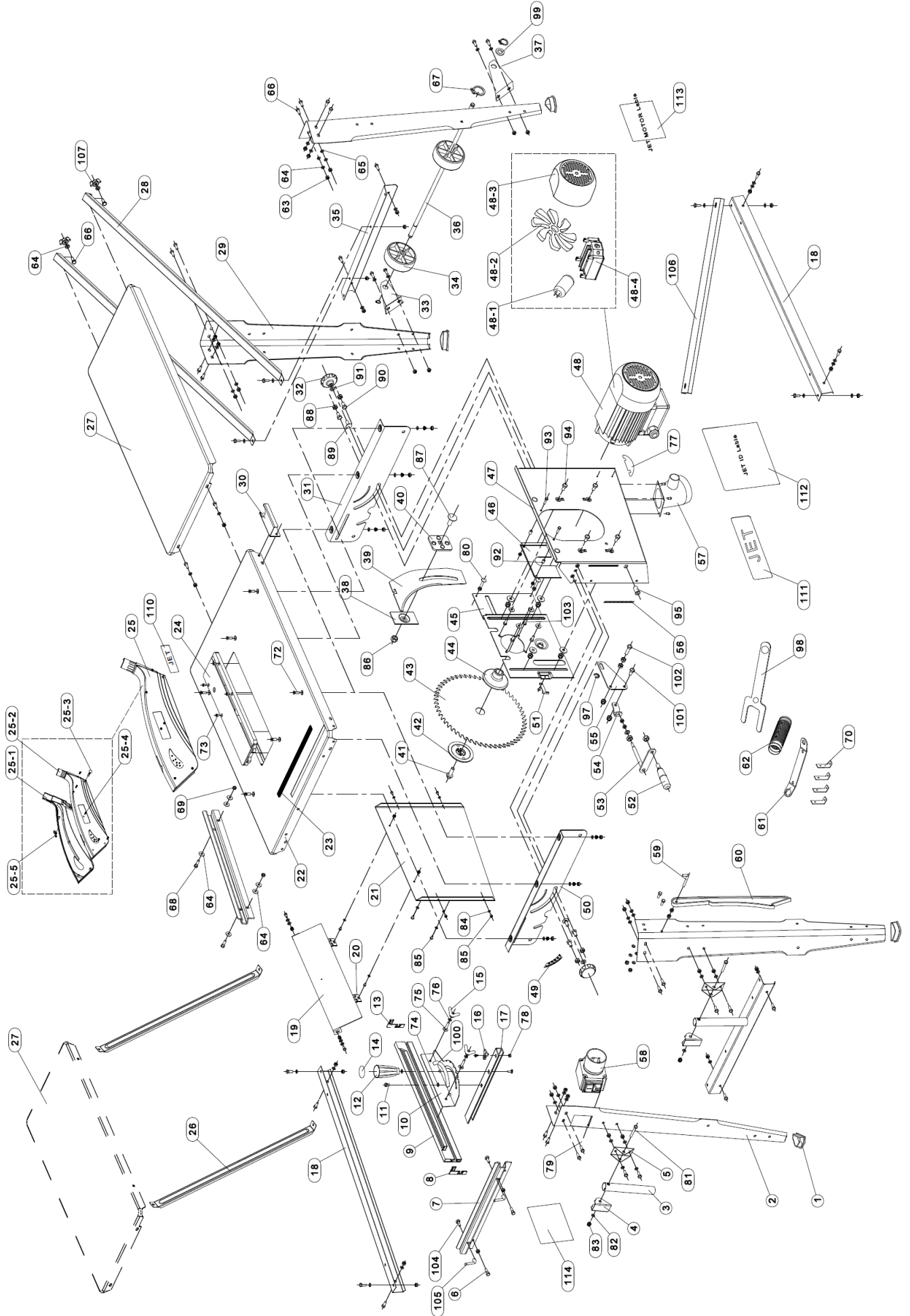
9 Rue des Pyrénées, 91090 LISSES, France

www.jettools.com



P- 10000910AM 2019-03

Parts Breakdown for JTS-315LA Table Saw



Parts List for JTS-315LA Table Saw

Index No.	Part No.	Description	Size	Qty.
1	JTS315LA-001	Rubber Foot		4
2	JTS315LA-002	Leg		1
3	JTS315LA-003	Pushing Handle		2
4	JTS315LA-004	Pushing Handle Cover		2
5	JTS315LA-005	Pushing Handle Seat		2
6	JTS315LA-006	Fit Bolt		2
7	JTS315LA-007	Rip Fence Carrier		2
8	JTS315LA-008	Front Stem		1
9	JTS315LA-009	Rip Fence		1
10	JTS315LA-010	Angle gauge		1
11	JTS315LA-011	Fit Bolt		1
12	JTS315LA-012	Long Handle		1
13	JTS315LA-013	Back Stem		1
14	JTS315LA-014	Handle Cover		1
15	JTS315LA-015	Nut		2
16	JTS315LA-016	Angle Point		1
17	JTS315LA-017	Bracket		1
18	JTS315LA-018	Strut Long		2
19	JTS315LA-019	Clip Case Protective Cap		1
20	JTS315LA-020	Hinge		2
21	JTS315LA-021	Clip Case		1
22	JTS315LA-022	Working Table		1
23	JTS315LA-023	Scale		1
24	JTS315LA-024	Table Insert		1
25	JTS315LA-025	Blade Guard		1
25-1	JTS315LA-025-1	Blade Guard ,Left		1
25-2	JTS315LA-025-2	Blade Guard, Right		1
25-3	JTS315LA-025-3	Cup Head Square Neck Bolt	M6x35	1
25-4	JTS315LA-025-4	Pan Head Tapping Screw	ST2.9 x13	5
25-5	JTS315LA-025-5	Butterfly Bolt M6		1
26	JTS315LA-026	Short Bracket		2
27	JTS315LA-027	Extension Table		1
28	JTS315LA-028	Long Bracket		2
29	JTS315LA-029	Leg		3
30	JTS315LA-030	Hose Support		1
31	JTS315LA-031	Supporting Plate,Front		1
32	JTS315LA-032	Locking Knob		2
33	JTS315LA-033	Wheel Bracket,Left		1
34	JTS315LA-034	Wheel		2
35	JTS315LA-035	Strut Short		2
36	JTS315LA-036	Wheel Shaft		1
37	JTS315LA-037	Wheel Bracket,Right		1
38	JTS315LA-038	Pressure Plate		1
39	JTS315LA-039	Riving Knife		1
40	JTS315LA-040	Riving Knife Sliding Seat		1
41	JTS315LA-041	Blade Bolt		1
42	JTS315LA-042	Saw Blade Plate		1
43	JTS315LA-043	Blade		1
44	JTS315LA-044	Saw Blade Flange		1
45	JTS315LA-045	Motor Bracket		1
46	JTS315LA-046	Holding Plate		1
47	JTS315LA-047	Chips Box		1
48	JTS315LA-048	Motor		1
48-1	JTS315LA-048-1	Motor Capacitor	30uf±5%; 450V	1
48-2	JTS315LA-048-2	Motor Fan		1
48-3	JTS315LA-048-3	Motor Cover		1
48-4	JTS315LA-048-4	Motor Box		1
49	JTS315LA-049	Angle Lable		1
50	JTS315LA-050	Supporting Plate,Back		1
51	JTS315LA-051	Pointer		1
52	JTS315LA-052	Blade Height Setting Handle		1
53	JTS315LA-053	Handle		1
54	JTS315LA-054	Connecting Block		1
55	JTS315LA-055	Guide Block		1

Parts List for JET JTS-315LA Table Saw

Index No.	Part No.	Description	Size	Qty.
56	JTS315LA-056	Height Scale		1
57	JTS315LA-057	Dust Extractor		1
58	JTS315LA-058	Switch & Plug		1
59	JTS315LA-059	Hook		1
60	JTS315LA-060	Push Stick		1
61	JTS315LA-061	Wrench		1
62	JTS315LA-062	Dust Extractor Pipe		1
63	JTS315LA-063	Hex Nut	M6	56
64	JTS315LA-064	Washer	6	50
65	JTS315LA-065	Spring Washer	6	38
66	JTS315LA-066	Hexagon Bolt	M6x16	46
67	JTS315LA-067	Circlips for shaft	20	6
68	JTS315LA-068	Hexagon Bolt	M6x30	2
69	JTS315LA-069	Hexagonal Nut self-lock	M6	2
70	JTS315LA-070	Feet		4
71				
72	JTS315LA-072	Hex Socket Countersunk Head cap screw	M6x20	6
73	JTS315LA-073	Pan Head Tapping Screw	M4x16	4
74	JTS315LA-074	Tensile spring		1
75	JTS315LA-075	Cup Head Square Neck Bolt	M6x20	3
76	JTS315LA-076	Large Washer	6	12
77	JTS315LA-077	Motor Plain Washer		1
78	JTS315LA-078	Hex. Locking Nut	M5	1
79	JTS315LA-079	Pan Head Tapping Screw	ST4.2x25	2
80	JTS315LA-080	Square Neck Bolt	M6 x25	2
81	JTS315LA-081	Hexagon Bolt	M8x45	2
82	JTS315LA-082	Plain Washer	8	6
83	JTS315LA-083	Hex. Locking Nut	M8	6
84	JTS315LA-084	Lock Washer External Teeth	4	6
85	JTS315LA-085	Pan Head Screw	M4x10	8
86	JTS315LA-086	Nut	M12	1
87	JTS315LA-087	Cup Head Square Neck Bolt	M12x35	1
88	JTS315LA-088	Nut	M8	6
89	JTS315LA-089	Square Neck Bolt	M8 x20	2
90	JTS315LA-090	Bolt	M8x12	4
91	JTS315LA-091	Washer	8	2
92	JTS315LA-092	Holding Plate Tube		2
93	JTS315LA-093	Hex Bolt	M5x20	2
94	JTS315LA-094	Hex Bolt	M8x12	4
95	JTS315LA-095	Hex.River Nut	M10	1
96				1
97	JTS315LA-097	Circlips for Shaft	10	1
98	JTS315LA-098	Wrench		1
99	JTS315LA-099	Washer	12	1
100	JTS315LA-100	Angle Scale		1
101	JTS315LA-101	Hex Bolt	M8x16	1
102	JTS315LA-102	Hex Bolt	M8x30	2
103	JTS315LA-103	Hex Bolt	M6x20	4
104	JTS315LA-104	Cup Head Square Neck Bolt	M6x25	2
105	JTS315LA-105	Lock Handle		1
106	JTS315LA-106	Support Bracket		1
107	JTS315LA-107	Wing Nut	M8	2
110	JTS315LA-110	JET Logo for Saw Guard		1
111	JTS315LA-111	JET 3D Logo	JET-92	1
112	JTS315LA-112	JET ID Label		1
113	JTS315LA-113	Motor Label		1
114	JTS315LA-114	Warning Label		1

Wiring Diagram for JTS-315LA Table Saw

10001910AM..... ~ 230V, 50Hz

	colour of strands	Litzenfarben	couleur des cordons
BK	black	schwarz	noir
WH	white	weiß	blanc
BU	blue	blau	bleu
RD	red	rot	rouge
BN	brown	braun	brun
GY	grey	grau	gris
GNYE	green-yellow	grün-gelb	vert-jaune

	meaning of symbol	Bedeutung der Zeichen	interprétation
M	motor	Motor	moteur
S	switch	Schalter	interrupteur
n	centrifugal switch	Fliehkraftschalter	déclencheur centrifuge
OL	overload cut-off	Überlastschalter	déclencheur surcharge
LS	limit switch	Positionsendschalter	micro
SB	E-stop	Not-Aus Taster	arret d'urgence

