



DC-1200-M
DC-1200-T

DUST COLLECTOR

DC-1200-M....10001057M...1~230V, 50Hz
DC-1200-T....10001057T....3~400V, 50Hz

PARTS LIST

TOOL FRANCE SARL
9 Rue des Pyrénées,
91090 LISSES
France

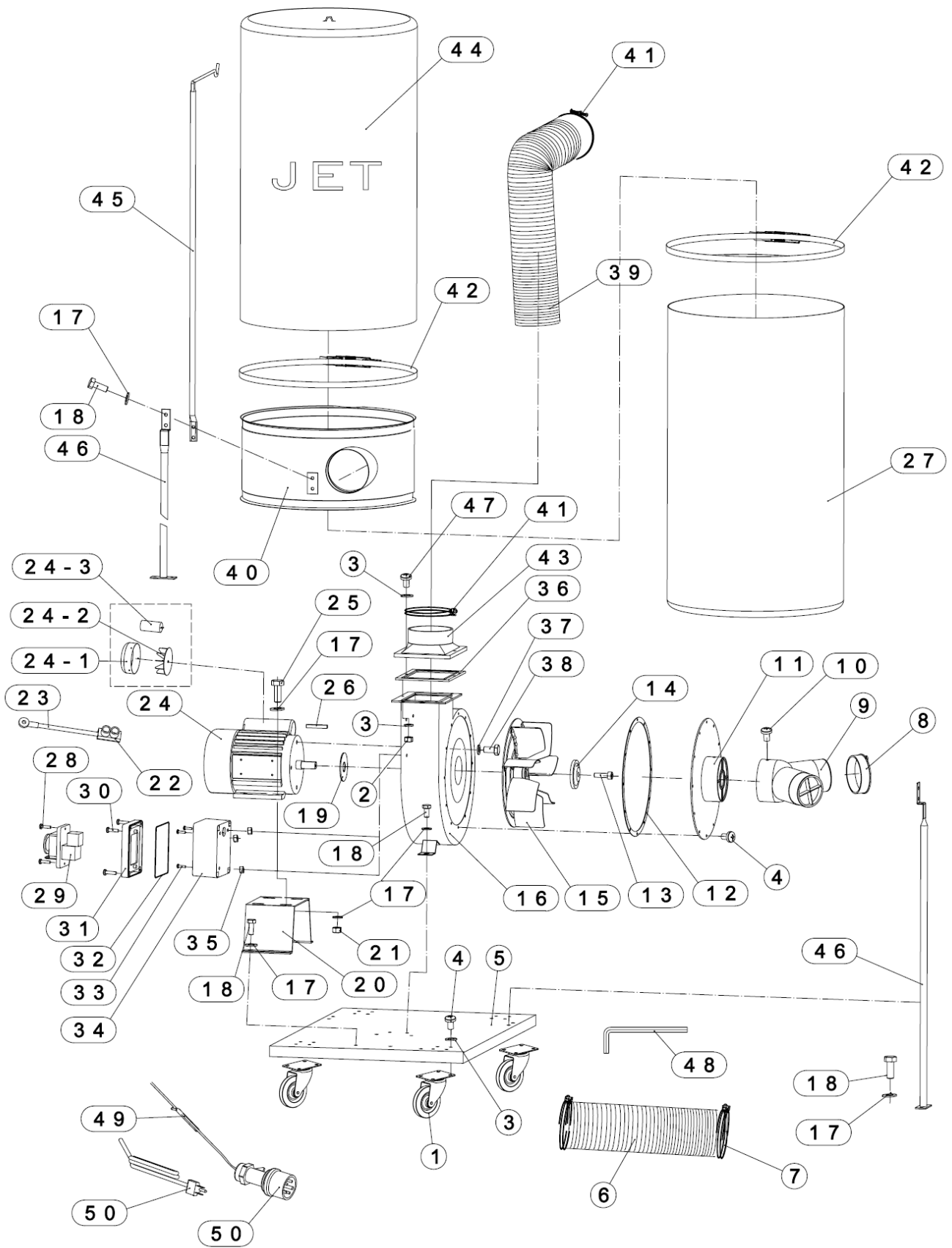
www.jettools.com



P-DC-1200-M/T

2019-05

DC-1200 Dust Collector – Exploded View



DC-1200 Dust Collector – Parts List

Index No.	Part No.	Description	Size	Qty.
1	DC1200-001	Caster	3"	4
2	DC1200-003	Nut	M6	6
3	DC1200-003	Washer	6	28
4	DC1200-004	Hex. Bolt	M6x10	28
5	DC1200-005	Base		1
6	DC1200-006	Hose	4"x2000	1
7	DC1200-007	Hose Clamp 4"	M100	2
8	DC1200-008	Cap		2
9	DC1200-009	Inlet Port		1
10	DC1200-010	Screw	M5x8	1
11	DC1200-011	Inlet Guard		1
12	DC1200-012	Packing		1
13	DC1200-013	Cap Screw	M6x20-L	1
14	DC1200-014	Washer		1
15	DC1200-015	Impeller		1
16	DC1200-016	Impeller Housing		1
17	DC1200-017	Washer	8	26
18	DC1200-018	Bolt	M8x16	18
19	DC1200-019	Washer		1
20	DC1200-020	Motor Base		1
21	DC1200-021	Hex. Nut	M8	4
22	DC1200-022	Wire Connector		1
23	DC1200-023	Wire		1
24	DC1200T-024	Motor 400V,50Hz, 3PH, P1=1.5kW complete		1
	DC1200M-024	Motor 230V, 50Hz, 1PH, P1=1.5kW complete		1
24-1	DC1200-024-1	Motor Cover 50uf		1
24-2	DC1200-024-2	Motor Fan		1
24-3	DC1200-024-3	Capacitor 450V 50uf-- Capacitor for 230V		1
25	DC1200-025	Bolt	M8X25	4
26	DC1200-026	Key	A5x25	1
27	DC1200-027	Collector Bag		1
28	DC1200-028	Screw	ST4.2x12	2
29	DC1200T-029	Switch 400V 50Hz 3PH		1
	DC1200M-029	Switch 230V 50Hz 1PH		1
30	DC1200-030	Screw	ST4.2x16	4
31	DC1200-031	Switch Plate		1
32	DC1200-032	Packing		1
33	DC1200-033	Screw	M5x12	3
34	DC1200-034	Switch Box Base		1
35	DC1200-035	Hex. Nut	M5	3
36	DC1200-036	Packing		4
37	DC1200-037	Washer	10	4
38	DC1200-038	Hex. Bolt	M10x16	4
39	DC1200-039	Hose Tube	5"X750mm	1
40	DC1200-040	Collector		1
41	DC1200-041	Hose Clamp 5"	M125	2
42	DC1200-042	Bag Clamp		2
43	DC1200-043	Outlet		1
44	DC1200-044	Filter Bag		1
45	DC1200-045	Upper bag Support		1
46	DC1200-046	Collector Support		1
47	DC1200-047	Hex. Bolt	M6x20	6
48	DC1200-048	Hex. Wrench	5	1
49	DC1200-049	Wire		1
50	DC1200T-050	Plug 400V 50Hz 3PH		1
	DC1200M-050	Wire & Plug 230V 50Hz 1PH		1

DC-1200 Dust Collector – Wiring Diagram

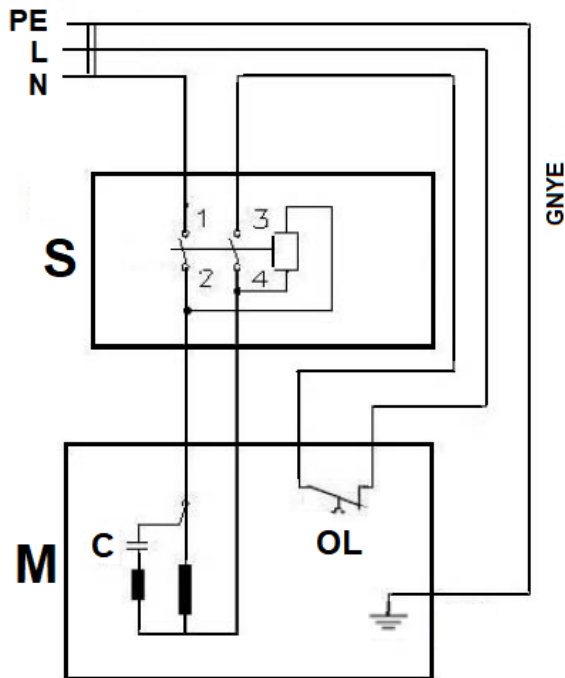
DC-1200-M....10001057M...1~230V, PE, 50Hz

DC-1200-T....10001057T....3~400V, PE, 50Hz

	colour of strands	Litzenfarben	couleur des cordons
BK	black	schwarz	noir
WH	white	weiß	blanc
BU	blue	blau	bleu
RD	red	rot	rouge
BN	brown	braun	brun
GNYE	green-yellow	grün-gelb	vert-jaune

	meaning of symbol	Bedeutung der Zeichen	interprétation
M	motor	Motor	moteur
S	switch	Schalter	interrupteur
C	condenser	Kondensator	condensateur
OL	overload cut-off	Überlastschuttschalter	déclencheur surcharge

1~230V, PE, 50Hz



3~400V, PE, 50Hz

