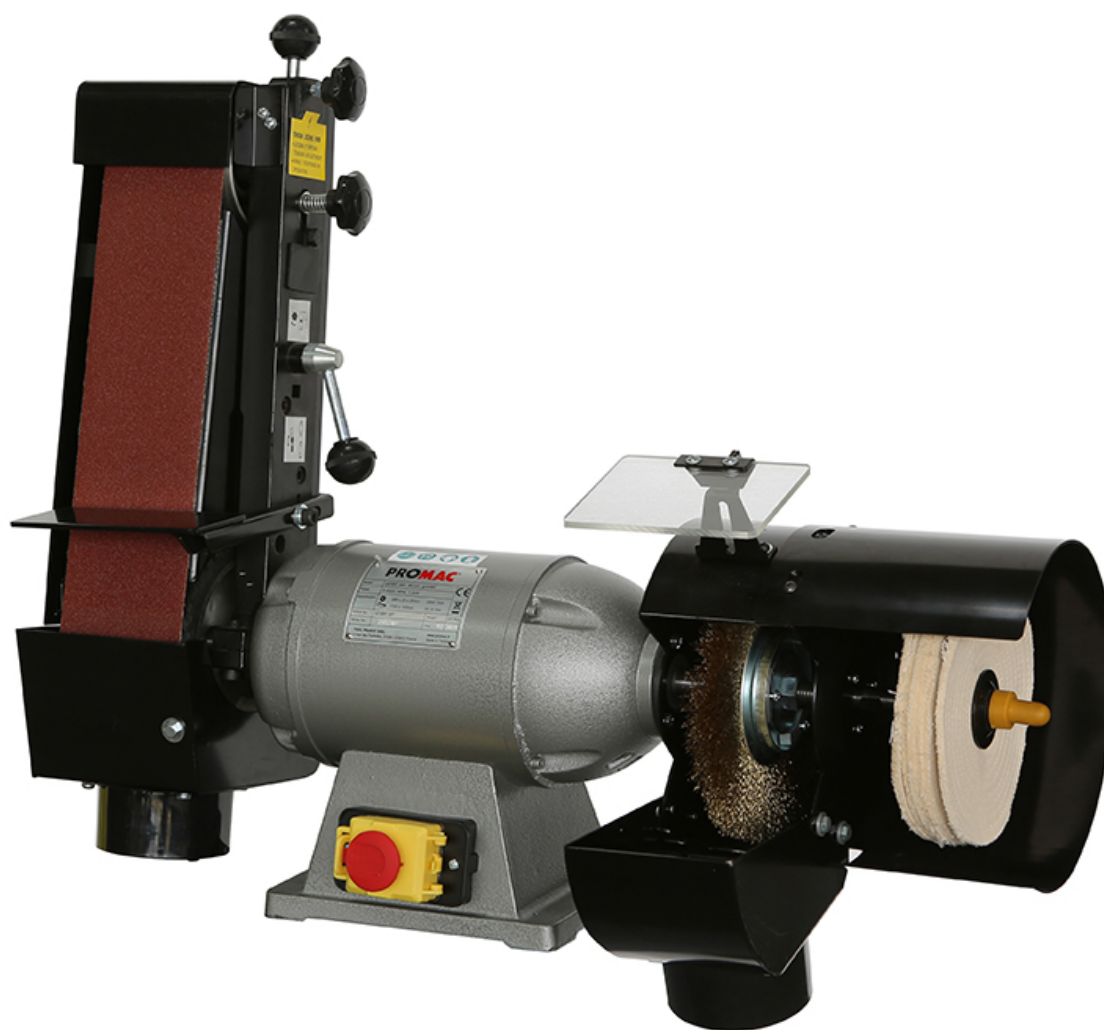


## Sander Bandschleifmaschine Touret à bande

## 323BF-BP



UK  
TOOL FRANCE SARL  
Unit 1a Stepnell Park, Off Lawford Road,  
Rugby  
CV21 2UX

France  
TOOL FRANCE  
9 Rue des Pyrénées, 91090 LISSES,  
France  
[www.promac.fr](http://www.promac.fr)

**CE-Conformity Declaration**  
**CE-Konformitätserklärung**  
**Déclaration de Conformité CE**

**Product / Produkt / Produit:**

Sander  
Bandschleifmaschine  
Touret à bande

**323BF-BP**

**Brand / Marke / Marque:**

**PROMAC**

**Manufacturer / Hersteller / Fabricant:**

TOOL FRANCE  
9 Rue des Pyrénées, 91090 LISSES, France

We hereby declare that this product complies with the regulations  
Wir erklären hiermit, dass dieses Produkt der folgenden Richtlinie entspricht  
Par la présente, nous déclarons que ce produit correspond aux directives suivantes

**2006/42/EC**

Machinery Directive  
Maschinenrichtlinie  
Directive Machines

**2014/30/EU**

electromagnetic compatibility  
elektromagnetische Verträglichkeit  
compatibilité électromagnétique

**2011/65/EU**

RoHS directive / RoHS-Richtlinie / Directive RoHS

designed in consideration of the standards  
und entsprechend folgender zusätzlicher Normen entwickelt wurde  
et été développé dans le respect des normes complémentaires suivantes

**EN ISO 12100:2010**

**EN 62841-1:2015**

**EN 62841-3-4:2016**

**EN61000-6-4:2007+A1:2011**

Responsible for the Documentation / Dokumentations-Verantwortung / Responsabilité de Documentation:  
Head Product-Mgmt. / Leiter Produkt-Mgmt. / Resp. Gestion des Produits

TOOL FRANCE



2019-08-19 Christophe SAINT SULPICE, General Manager

TOOL FRANCE

9 Rue des Pyrénées, 91090 LISSES, France

## **Safety Rules for All Power Tools**

1. Read and become familiar with the entire instruction manual. Learn the tool's applications, limitations and possible hazards.
2. Earth all tools. If the tool is equipped with a three-prong plug. It must be plugged into a three-contact electric outlet. The third prong is a ground to provide protection against accidental electrical shock. If an adapter is used to accommodate a two-contact outlet, the adaptor's grounding lug must be connected to a known ground. Never remove the third prong on a three prong plug.
3. Check damaged parts. A guard or any other part that is damaged should be checked to ensure that it will operate properly and perform its intended function before the tool is used further. Check for proper alignment of moving parts and for possible broken parts, loose mountings, or any other condition that could affect the tool's operation. A guard or other damaged part should be properly repaired or replaced.
4. Disconnect power before servicing and when changing accessories such as blades, cutters.
5. Keep guards in place and in working order.
6. Protect your eyes from being injured by objects thrown by a power tool. Always wear safety glasses or safety goggles.
7. Wear a face mask or dust mask if the cutting operation produces dust.
8. Don't force the tool. It will give a better and safer performance when used on jobs for which it was designed.
9. Avoid accidental starting. Ensure that the power switch is in the OFF position before plugging in the power cord. Remove the switch when the tool is not being used.
10. Remove adjusting keys and wrenches. Ensure that keys and adjusting wrenches are removed from the tool before turning it on.
11. Drugs, alcohol, and medication. Do not operate tool if you are under the influence of drugs, alcohol, or medication that could affect your ability to use the tool properly.
12. Use recommended accessories. Using improper accessories can be hazardous. If in doubt, check the instruction manual.
13. Never stand on a tool. Falls can result in injury.
14. Never leave a tool running unattended. Turn the power switch OFF. Don't leave the tool until it has come to a complete stop.
15. Always remove the power cord plug from the electric outlet when making adjustments, changing parts, cleaning, or working on the table.
16. Avoid dangerous conditions. Don't use power tools in wet or damp areas or expose them to rain. Keep your work area clean and well lighted. Do not use power tools in areas where fumes from paint, solvents, or flammable liquids pose a potential hazard.
17. Keep visitors and children away. Other people should keep a safe distance from the work area, especially when the tool is operating.

18. Use the proper tool. Don't force a tool to do a job for which it was not designed.
19. Keep tools in top condition. Keep them clean and sharp for best and safest performance. Follow the instructions for changing accessories and lubricating.
20. Secure all work. When practical use clamps or a vise to hold work. It is safer than using your hands and prevents round or odd shaped pieces from turning.
21. Don't overreach. Keep proper footing and balance at all times. Wear oil resistant rubber-soled footwear. Keep the floor clear of oil, scrap wood, and other debris.
22. Wear proper clothing and, if necessary, protective hair covering. Loose clothing or jewelry can get caught in moving parts.
23. Make the workshop childproof with padlocks, master switches, or by removing starter keys.

## EN – ENGLISH (Original instructions)

### Operating Instructions

Dear Customer,

Many thanks for the confidence you have shown in us with the purchase of your new machine. This manual has been prepared for the owner and operators of a PROMAC sander to promote safety during installation, operation and maintenance procedures. Please read and understand the information contained in these operating instructions and the accompanying documents. To obtain maximum life and efficiency from your machine, and to use the machine safely, read this manual thoroughly and follow instructions carefully.

#### ...Table of Contents

1. Declaration of conformity
2. Warranty
3. Safety
  - Authorized use
  - General safety notes
  - Remaining hazards
4. Machine specifications Technical data
5. UNPACKING AND CHECKING LIST
6. 323BF-BP Exploded View
7. 323BF-BP Part List

#### 1. Declaration of conformity

On our own responsibility we hereby declare that this product complies with the regulations\* listed on page 2.

Designed in consideration with the standards\*\*.

#### 2. Warranty

Tool France guarantees that the supplied product is free from material defects and manufacturing faults.

This warranty does not cover any defects which are caused, either directly or indirectly, by incorrect use, carelessness, accidental damage, repair, inadequate maintenance or cleaning and normal wear and tear.

Any warranty details (i.e. warranty period) can be found in the General Terms and Conditions (GTC) that are integral part of the contract. These GTC can be viewed at the website of your dealer or sent to you upon request.

Tool France reserves the right to make changes to the product and accessories at any time.

#### 3. Safety

##### 3.1 Authorized use

This sander is designed for sander metal and a similar sander only. Machining of other materials is not permitted and may be carried out in specific cases only after consulting with the manufacturer.

The proper use also includes compliance with the operating and maintenance instructions given in this manual.

The machine must be operated only by person's familiar with its operation and maintenance and who are familiar with its hazards.

The required minimum age must be observed.

The machine must only be used in a technically perfect condition.

When working on the machine, all safety mechanisms and covers must be mounted.

In addition to the safety requirements contained in these operating instructions and your country's applicable regulations, you should observe the generally recognized technical rules concerning the operation of metalworking machines.

Any other use exceeds authorization.

In the event of unauthorized use of the machine, the manufacturer renounces all liability and the responsibility is transferred exclusively to the operator.

##### 3.2 General safety notes

Metalworking machines can be dangerous if not used properly. Therefore, the appropriate general technical rules as well as the following notes must be observed.



Read and understand the entire instruction manual before attempting assembly or operation.



Keep this operating instruction close by the machine, protected from dirt and humidity, and pass it over to the new owner if you part with the tool.

No changes to the machine may be made.

Daily inspect the function and existence of the safety appliances before you start the machine.

Do not attempt operation in this case, protect the machine by unplugging the power cord.

Before operating the machine, remove tie, rings, watches, other jewelry, and roll up sleeves above the elbows.

Remove all loose clothing and confine long hair.

**Wear safety shoes;** never wear leisure shoes or sandals.

Always wear the approved working outfit:

- safety goggles
- ear protection
- dust protection



Do not wear gloves while operating this machine.



Install the machine so that there is sufficient space for safe operation and work-piece handling.

Keep work area well lighted.

The machine is designed to operate in closed rooms and must be bolted stable on firm and levelled table surface

Make sure that the power cord does not impede work and cause people to trip.

Keep the floor around the machine clean and free of scrap material, oil and grease.

Stay alert!

Give your work undivided attention.

Use common sense. Do not operate the machine when you are tired.

Keep an ergonomic body position. Maintain a balanced stance at all times.

Do not operate the machine under the influence of drugs, alcohol or any medication. Be aware that medication can change your behavior.



Never reach into the machine while it is operating or running down.



Keep children and visitors a safe distance from the work area.

Never leave a running machine unattended. Before you leave the workplace switch off the machine.

Do not operate the electric tool near inflammable liquids or gases.

Observe the fire fighting and fire alert options, for example the fire extinguisher operation and place.

Do not use the machine in a damp environment and do not expose it to rain.

Always use a suitable dust collection device

Machine only stock which rests securely on the table.

Specifications regarding the maximum or minimum size of the work-piece must be observed.

Do not stand on the machine.

Connection and repair work on the electrical installation may be carried out by a qualified electrician only.



Have a damaged or worn power cord replaced immediately.

Make all machine adjustments or maintenance with the machine unplugged from the power source.



### 3.3 Remaining hazards

When using the machine according to regulations some remaining hazards may still exist.

Thrown work-pieces and work-piece parts can lead to injury.

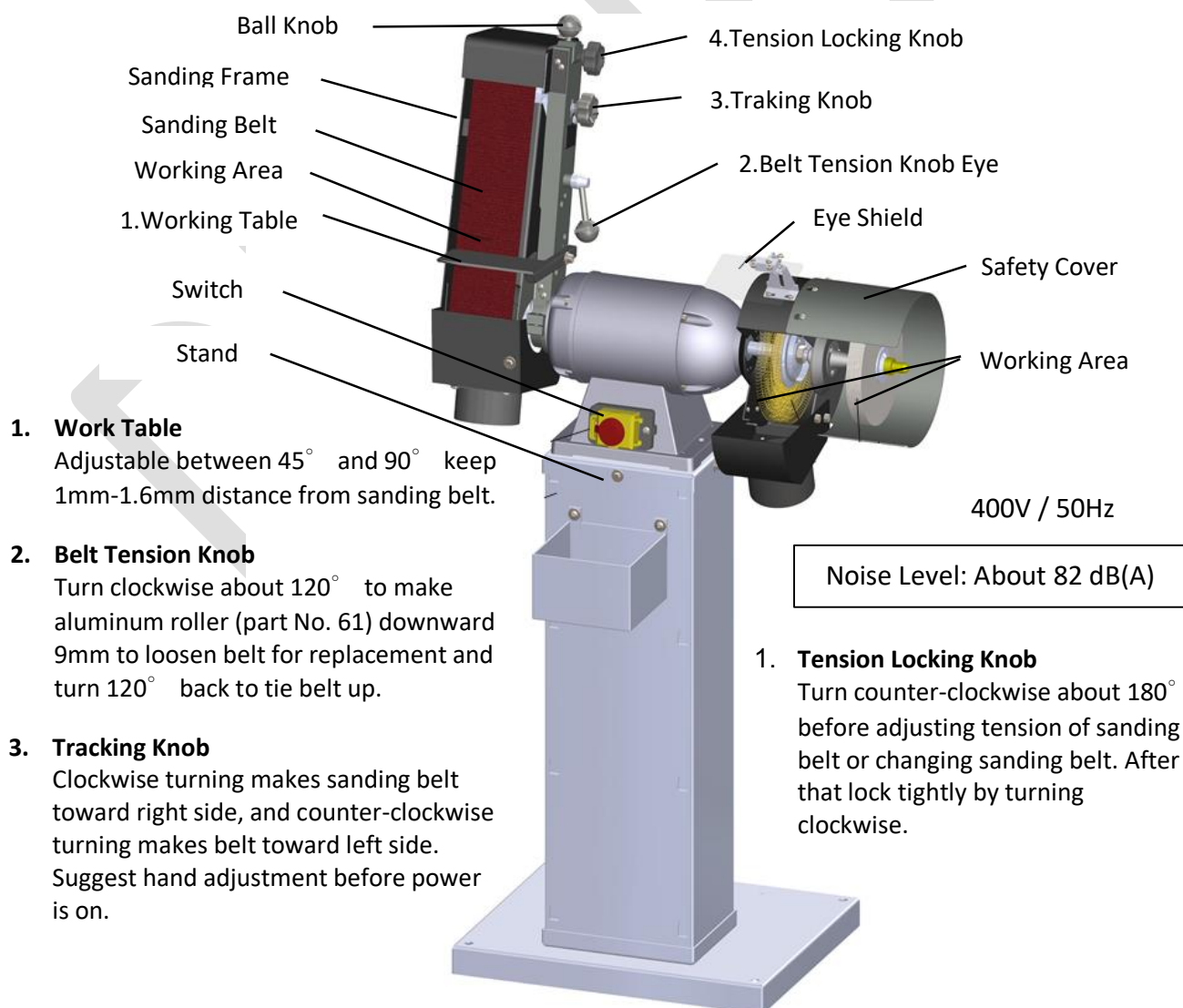
Dust and noise can be health hazards. Be sure to wear personal protection gear such as safety goggles and dust mask. Use a suitable dust collection system.

The use of incorrect mains supply or a damaged power cord can lead to injuries caused by electricity.

## Technical Data

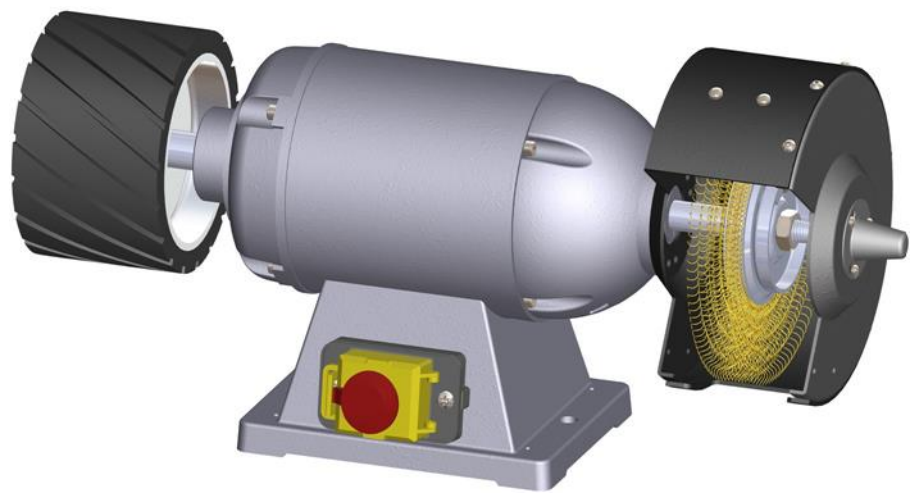
MODEL	323BF-BP
MOTOR (OUTPUT)	1.0Kw
PHASE	Three
WIRE WHEEL / polishing wheel	200 x 19 x 16mm / 175x20x12
WIRE SPEED	2850rpm
SANDING BELT	100 x 1100mm
BELT SPEED	24m/sec
DRIVING WHEEL	160 x 105mm
FLAT GRINDING SUREACE	105 x 250mm
DIMENSIONS (L x W x H)	295 x 285 x 690mm
MACHINE HEIGHT (W/STAND)	1480mm
WEIGHT (NET / GROSS)	36/37.5kgs
CABINET STAND (L x W x H)	380 x 395 x 810mm

## GETTING TO KNOW YOUR MACHINE





UNPACKING AND CHECKING LIST



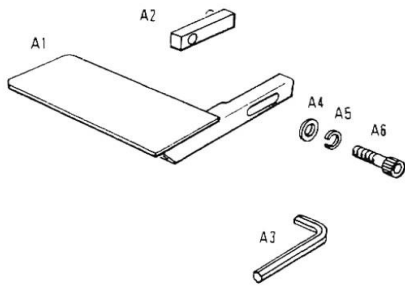
GRINGER  
ASSEMBLY Q'TY: 1

LOOSE PARTS IN RECTANGLE BOX

Figure				
Title	Sanding Frame Assembly	Sanding Belt	Protection Cover	Protection Sheet
Q'ty	1	1	1	1

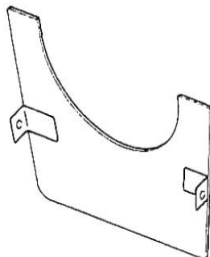
## LOOSE PARTS IN RECTANGLE BOX

### Bag 1..... Working Table



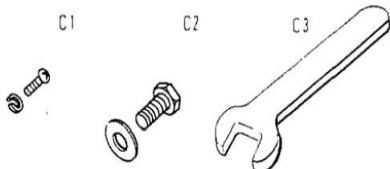
Ref. No.	Parts Name / Description	Q'ty
A1	Working Table	1
A2	Set Block	1
A3	Hex. Wrench 6mm	1
A4	Washer Ø8.5× Ø18×2	1
A5	Spring Washer M8	1
A6	Cap Screw M8 P1.25×30	1

### Bag 2.....Seal Plate



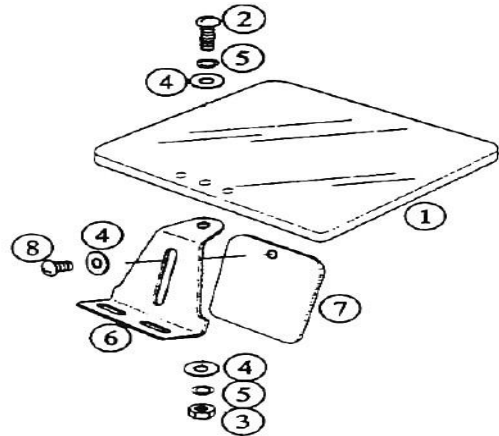
Ref. No.	Parts Name / Description	Q'ty
B1	Seal Plate	1

### Bag 3..Screw, Washer, Open Spanner



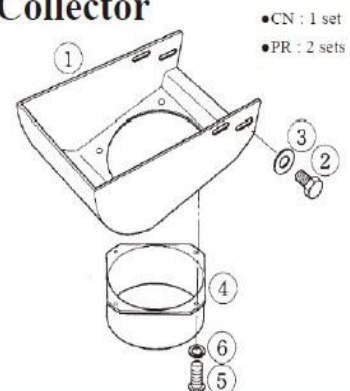
Ref. No.	Parts Name / Description	Q'ty
C1	Screw / Spring Washer	3/3
C2	Screw / Washer	6/6
C3	Open Spanner	1

### Bag 4: Eyeshield



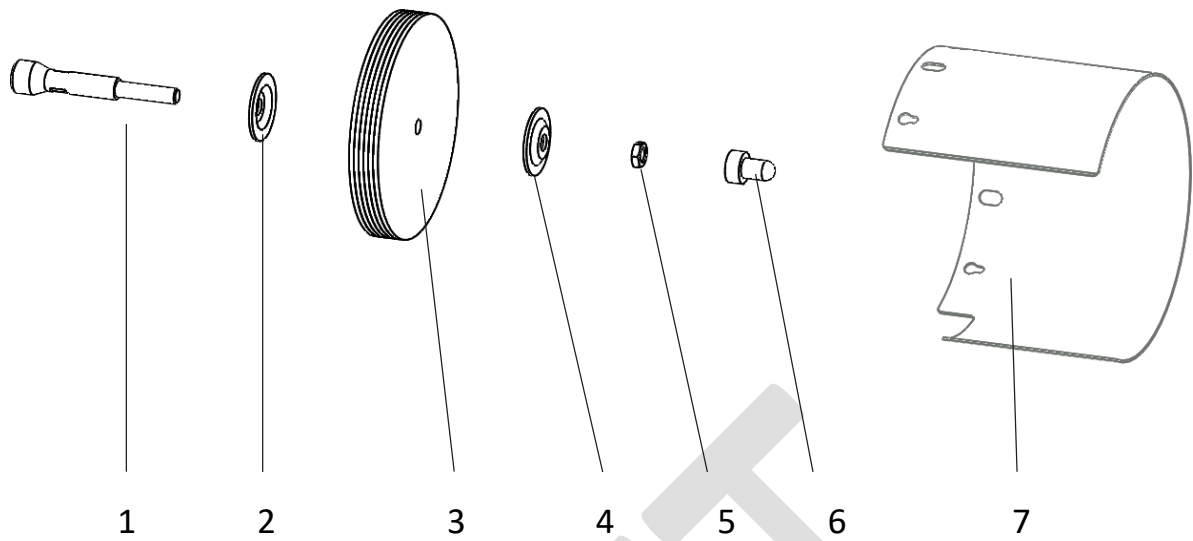
Ref. No.	Parts Name / Description	Q'ty
1	Eye Shield	1
2	Screw M6×20L	1
3	Nut M6	1
4	Washer M6×16×2t	3
5	Spring Washer M6	2
6	Bracket	1
7	Spark Arrestor	1
8	Screw M6×8L	1

### Bag 5: Dust Collector



Ref No.	Parts Name	Q'ty
1	Dust Collector	1
2	Hex Bolt	4
3	Washer	4
4	Chip Outlet	1
5	Screw	4
6	Spring Washer	4

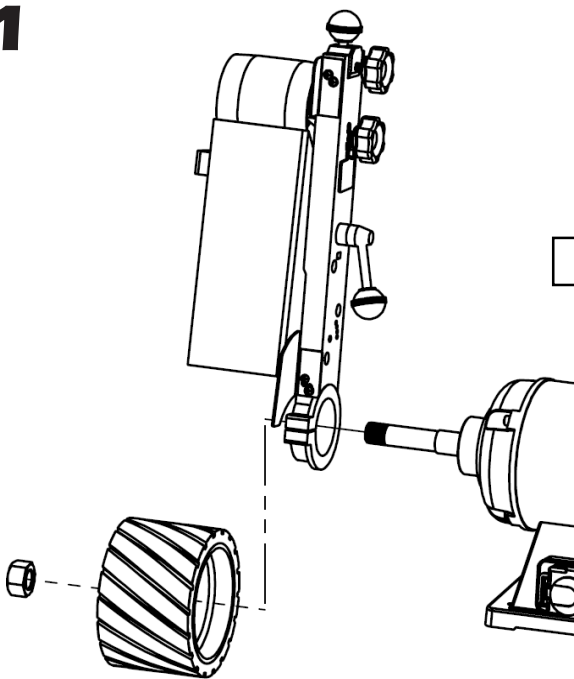
## LOOSE PARTS IN RECTANGLE BOX



Ref No.	Part Name	Q'ty
1	Adaptor	1
2	Disc Washer	1
3	Buffer	1
4	Disc Washer	1
5	Hex Washer	1
6	Rotor Shaft Cap	1
7	Polisher Cover	1

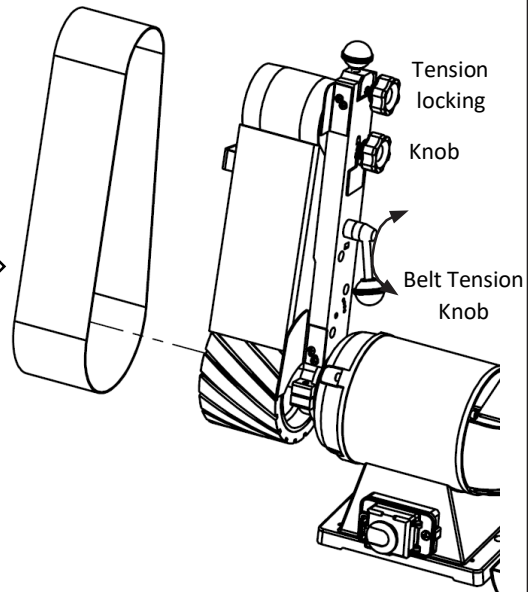
## ASSEMBLY CHART – SANDING BELT

**1**



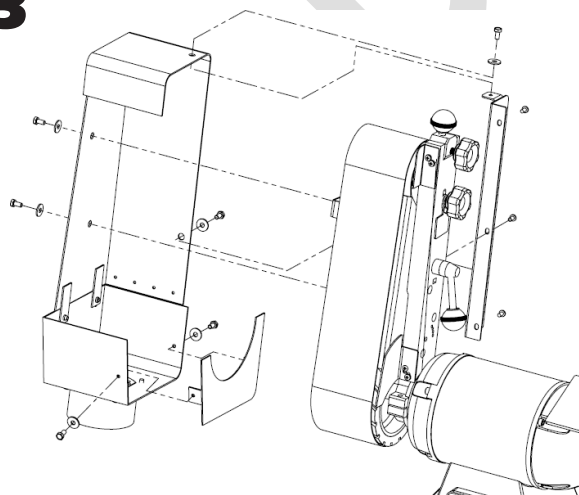
1. Remove the left side hex. nut and rubber roller from shaft.
2. Place frame assembly in. tighten cap screw by 6mm hex. wrench(Supplied)
3. Mount the rubber roller into frame assembly. tighten hex. nut firmly by wrench

**2**



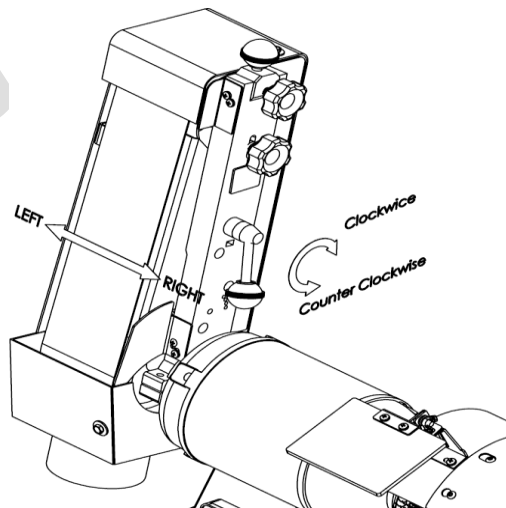
1. Observe aluminum roller whether it's tail end is at the right angle (90°) to the frame. (Turn tracking knob clockwise may make the tail end of roller upward).
2. Turn tension locking knob counter-clockwise about 180° then turn belt tension knob clockwise about 120° to make aluminum roller downward and locate sanding belt on the center of two rollers.
3. Turn belt tension knob counter-clockwise 120° back to tie belt up.

**3**



1. Fix protection sheet by 3 screws.
2. Fix protection cover by 4 screws.
3. Fix seal plate by 2 screws.

**4**

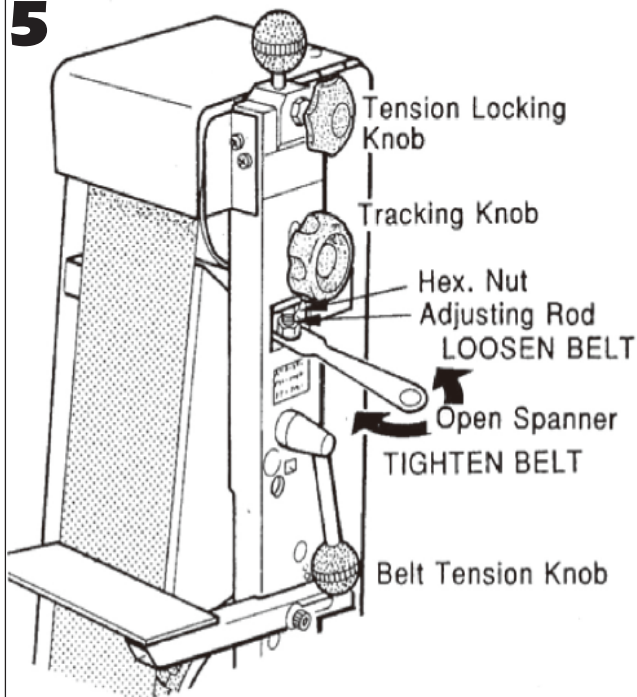


### BELT BALANCE

1. Turn tracking knob clockwise to make sanding belt toward right side or turn counter-clockwise to make belt toward left side. Note: It is only allowed a tiny adjustment at each turn.
2. Rotate belt by hand. meanwhile adjust tracking knob.
3. Control the switch for a short on/off starting with left hand. meanwhile put right hand on tracking knob for clockwise or counter turning till the belt runs stably between the two rollers.

## ASSEMBLY CHART -SANDING BELT DEVICE

**5**



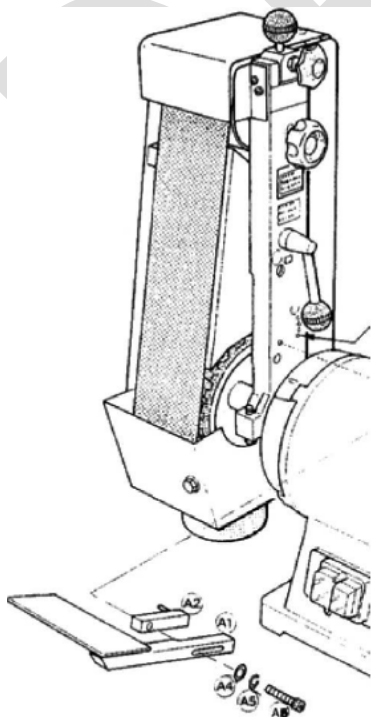
### BELT TENSION ADJUSTMENT

1. Be sure the switch is on OFF position.
2. Test belt tension from the back by thumb press.
3. If the tension is not high enough for working, may begin the following procedures:
  - 3.1. Loosen hex. nut and turn tension locking knob counter-clockwise about 180°.
  - 3.2. Turn the belt tension knob clockwise about 120°.
  - 3.3. Open the cover where the position is located down the tracking knob.
  - 3.4. Clockwise loosen the hex. nut (Part No. 58) by a supplied 12mm open spanner.
  - 3.5. Turn adjusting rod (Part No. 59) clockwise to increase belt tension.
 

NOTE: 1) Each clockwise turning of adjusting rod makes aluminum roller upward 2.5mm, and each counter turning shall make the roller downward 2.5mm.

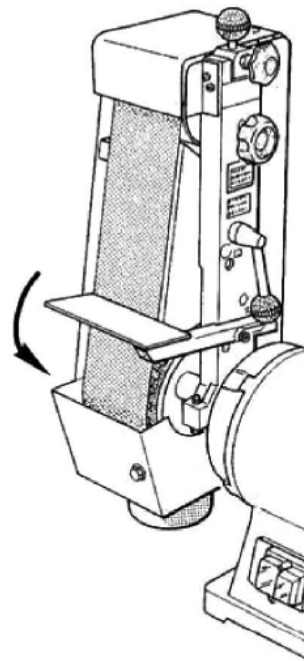
2) Normally, it is unnecessary to make a whole turning of 2.5mm, micro adjustment is always recommended. Each edge turning of the hex. adjusting rod makes aluminum roller upward or downward 0.42mm.
  - 3.6. Counter-clockwise tighten the hex. nut (Part No. 58) to fix the position of adjusting rod.
  - 3.7. Close the cover.
4. Turn belt tension knob counter-clockwise 120° back to tie belt up.
5. Repeat the procedures of belt balance of the fig. 4 (page 11).
6. After adjusting belt tension, before operating, turn tension locking knob clockwise to make the shaft (part no. 67) tightly. And tighten hex. nut to avoid losing.

**6**



Use 6mm hex. wrench to fix working table and its accessories into hole at the desired angles.

**7**

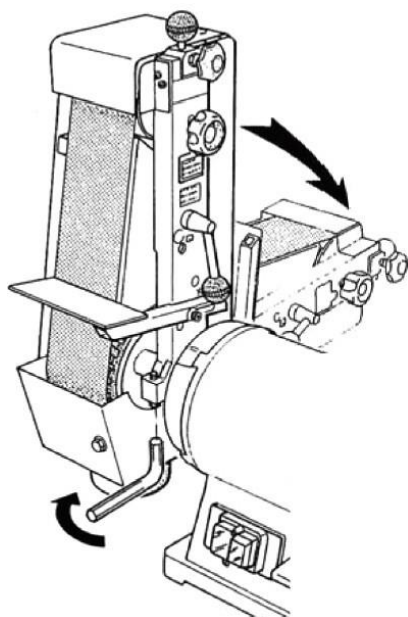


This working table is adjustable for the angles from 45° ~90° The 4 angle holes give different angles of 45°, 60°, 75°, 90° by the insertion of the pin of working table.



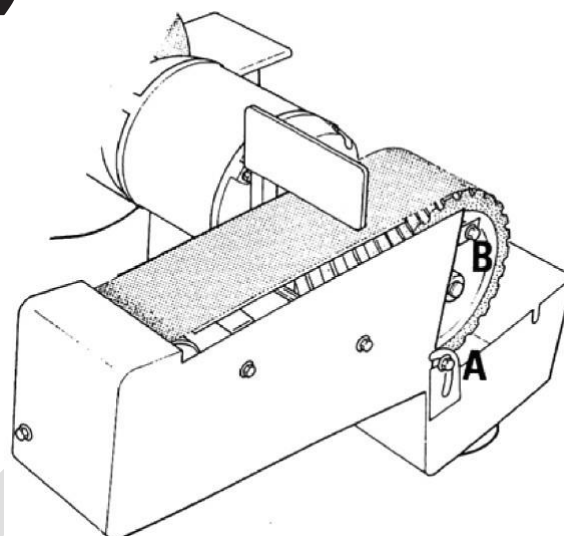
## ASSEMBLY CHART -SANDING BELT DEVICE

**8**



1. This machine is designed to allow the sanding belt to be operated vertically or horizontally at your comfortable choice.
2. Use 6mm hex. wrench may loosen and tighten cap screw to adjust frame assembly in proper angles.

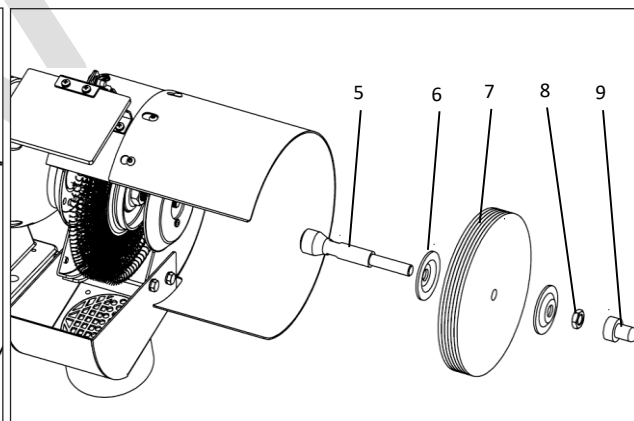
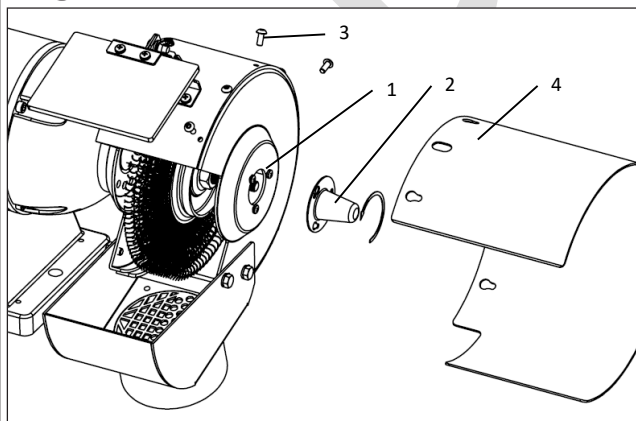
**9**



### Curve Sanding

1. Put frame assembly to horizontal position.
2. Loosen screw A and B showed in figure.
3. open roller covers to proper position and fix it.
4. This machine is now ready for the operation of curve sanding.

**10**



### Step

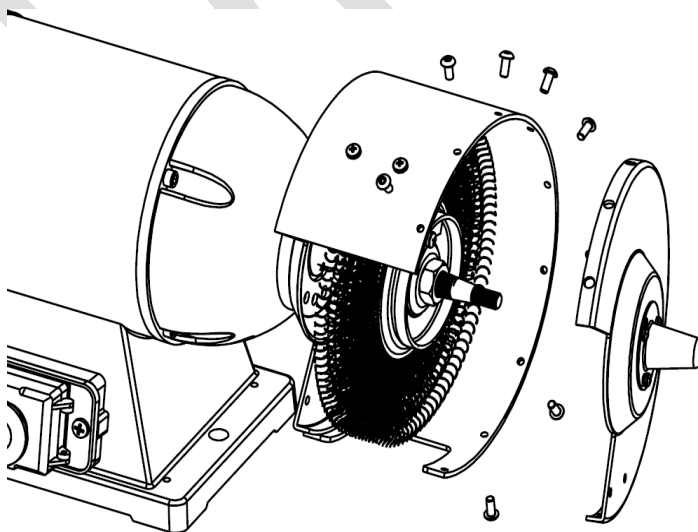
1. Loosen the screw (1), remove (2) Rotor Shaft Cap, and tighten the screw (1).
2. Remove the (3) screw, put on the (4) Safety Cover, and tighten the (3) screw.
3. Assemble (5) Adaptor, (6) Disc Washer, (7) Buffer, (8) Hex Nut, (9) Adaptor Cap in sequence and fix it to the shaft.

## REPLACEMENT OF BELT

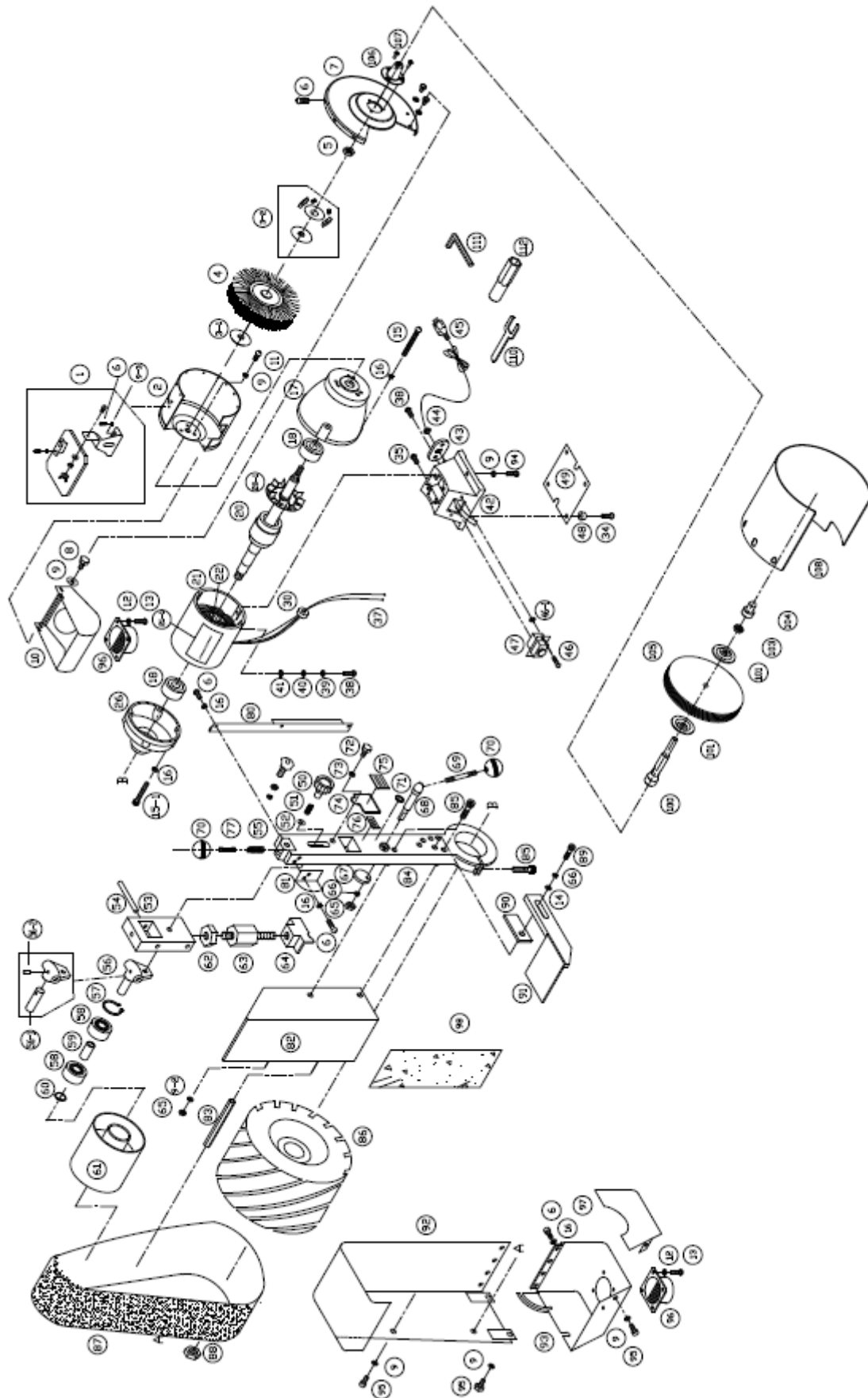
1. Loosen hex. nut and turn tension locking knob counter-clockwise about 180°
2. Turn belt tension knob clockwise about 120°
3. Remove seal plate, protection cover and the used belt.
4. Locate the new belt on the center of two rollers.
5. Turn belt tension knob counter clockwise 120° back to tie belt up. Rotate belt by hand, meanwhile adjust tracking knob as a pretest before power test.
6. Locate protection cover and seal plate then use left hand to control the switch with a short on/off starting, meanwhile put right hand on tracking knob for clockwise or counter turning till the belt runs stably between the two rollers.
7. Check belt tension if the tension is improper for working then begin the adjustment procedures until the tension is satisfactory.
8. Repeat the procedures of hand test & power test for belt balance as the fig 4 (page 11).
9. After adjusting belt tension, before operating, turn tension locking knob clockwise to make the shaft (part no.67) tightly. And tighten hex. nut to avoid losing.
10. Adjust frame assembly and fix working table at the desired angles.

## REPLACEMENT OF WHEEL

1. Remove tool rest and eye shield or dust collector unit from wheel cover by taking off bolts and screws.
2. Take off screws to allow removing wheel cover as figure.
3. Remove nut, disc washer or balancing flange and waste wheel.
4. Put new wheel and every parts back in reverse order. It's important to make a good adjustment of balancing before assembling wheel covers. This message could be learned
5. For your safety, check all screws and bolts. Make sure they are all well fixed before switch on.



## 323BF-BP Exploded View





### 323BF-BP Parts List

Index No.	Part No.	Description	Size	Qty.
1	PM-323001	Eye Shield Set		1
2	PM-323002	Int. Cover		1
3	PM-323003	Disc Washer		2
3-2	PM-323003	Balancer Set		1
4	PM-323004	Wire Brush		1
5	TS-0561071	Hex. Nut	5/8"	1
6	TS-2172012	Machine Screw	M5 x 8L	9
7	PM-323007	Wheel Cover		1
8	PM-323008	Hex. BOLT		4
9	TS-1550041	Washer	M6 x 18 x 2.0T	4
9-3	TS-2361051	Spring Washer	M5 x12 x1T	2
10	PM-323010	Dust Collector		1
11	TS-081F031	Machine Screw	1/4" x 1/2"	3
12	TS-2361061	Spring Washer	M6	19
13	TS-1533042	Machine Screw	M6 x 12L	8
14	PM-323014	Washer	M6 x 18 x 2.0T	8
15	TS-2172002	Cap Screw	3/16"x1/4"	4
15-1	TS-2172062	Cap Screw	3/16"x1"	4
16	TS-2361051	Spring Washer	M5	9
17	PM-323017	Right Support		1
18	PM-323018	Ball Bearing		1
20	PM-323020	Shaft		1
20-1	PM-323020-1	Fan		1
21	PM-323021	Wiring Housing		1
22	PM-323022	Wiring		1
25	PM-323025	Ball Bearing		1
26	PM-323026	Left Support		1
34	TS-2172032	Machine Screw	3/16" x 1/2"	4
35	PM-323035	Screw		1
38	TS-2172022	Machine Screw	3/16" x 3/8"	3
39	PM-323039	Int. Washer	M4.5	1
40	PM-323040	Copper Set		1
41	TS-2361051	Washer	M5	1
42	PM-323042	Base		1
43	PM-323043	Fixing Plate		1
44	PM-323044	Strain Relief		1
45	PM-323045	Power Cord		1
46	TS-2285303	Screw	3/16" x 1-1/4"	2
46-1	TS-2361051	Hex. Nut	3/16"	1
47	PM-323047	NVR		1
48	PM-323048	Pad		4
49	PM-323049	Base Plate		1
50	PM-323050	Tracking Knob		1
51	PM-323051	Spring		1
52	PM-323052	Washer		1
53	PM-323053	Sliding Block		1
54	PM-323054	Pin		1
55	PM-323055	Spring		1
56	PM-323056	Shaft		1
57	PM-323057	Snap Ring		1
58	PM-323058	Ball Bearing		2
59	PM-323059	Bush		1
60	PM-323060	Snap Ring		1
61	PM-323061	Aluminum Roller		1
62	TS-1540061	Hex. Nut	M8	1
63	PM-323063	Adjusting Rod		1
64	PM-323064	Press Block		1
65	PM-323065	Hex. Nut-Loose proof		1

Index No	Part No	Description	Size	Qty
66	TS-2361081	Spring Washer	M8	2
67	PM-323067	Cam		1
68	PM-323068	Cam Shaft		1
69	PM-323069	Screw Shaft		1
70	PM-323070	Ball Knob		2
71	PM-323071	Loosen-Tight Plate		1
72	TS-1482031	Cover Screw	M6 x 15L	1
73	PM-323073	Wave Washer		1
74	PM-323074	Cover		1
75	PM-323075	Cover plate		1
76	PM-323076	Adjusting Plate		1
77	PM-323077	Screw Shaft A		1
80	PM-323079	Protection Sheet 1		1
81	PM-323080	Protection Sheet 2		1
82	PM-323081	Belt Support		1
83	PM-323082	Hex. Shaft		1
84	PM-323083	Sanding Frame		1
85	TS-1504071	Cap Screw	M8 x 35L	3
86	PM-323085	Rubber Roller		1
87	PM-323086	Sanding Belt		1
88	PM-323087	Hex. Nut-Left Thread	7/8"	1
89	TS-1504061	Cap Screw	M8 x 30L	1
90	PM-323089	Set Block		1
91	PM-323090	Working Table		1
92	PM-323091	Sanding Belt Protector 1		1
93	PM-323092	Sanding Belt Protector 2		1
94	TS-0050051	Hex bolt	1/4" x 1"	4
95	TS-1482021	Hex bolt	M6 x 12L	8
96	PM-323095	Chip Outlet		1
97	PM-323096	Seal Plate		1
98	PM-323097	Graphite Packing		1
100	9190*	Adapt (Including #100~#103)	26xM12x135mm	1
104	9493*	Adapt Cap	Ø25 x 36.5	1
105	9339*	Mop/Buffer	7"x12mm	1
106	PM-322116	Rotor Shaft Cap		1
107	PM-322107	Screw	M4x6L	3
108	PM-322118	Safety Cover	8"	1
110	PM-323110	Open Spanner		1
111	PM-323111	Hex. Wrench		1
112	PM-323112	Socket Wrench		1

# ABOUT WORKSTAND

[Optional]

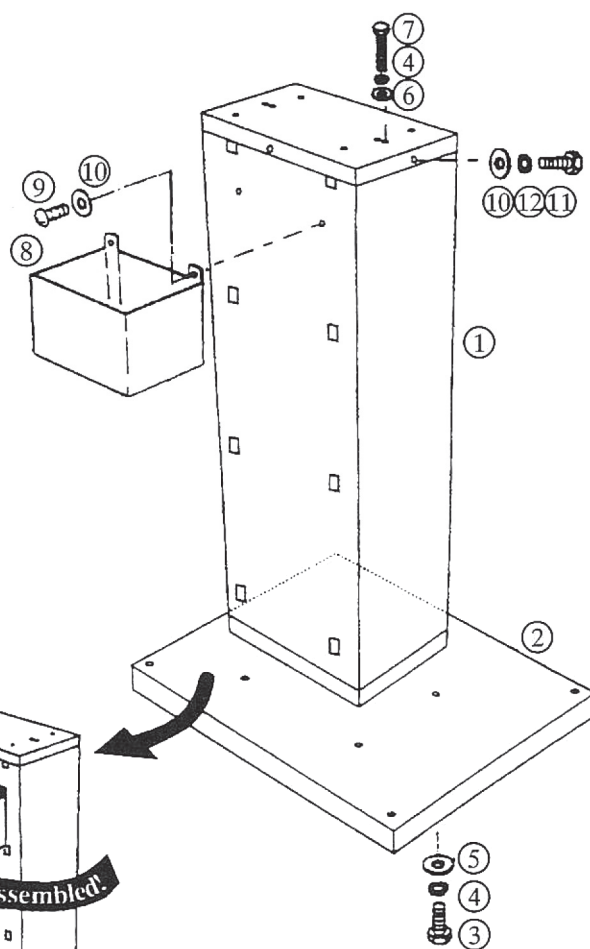
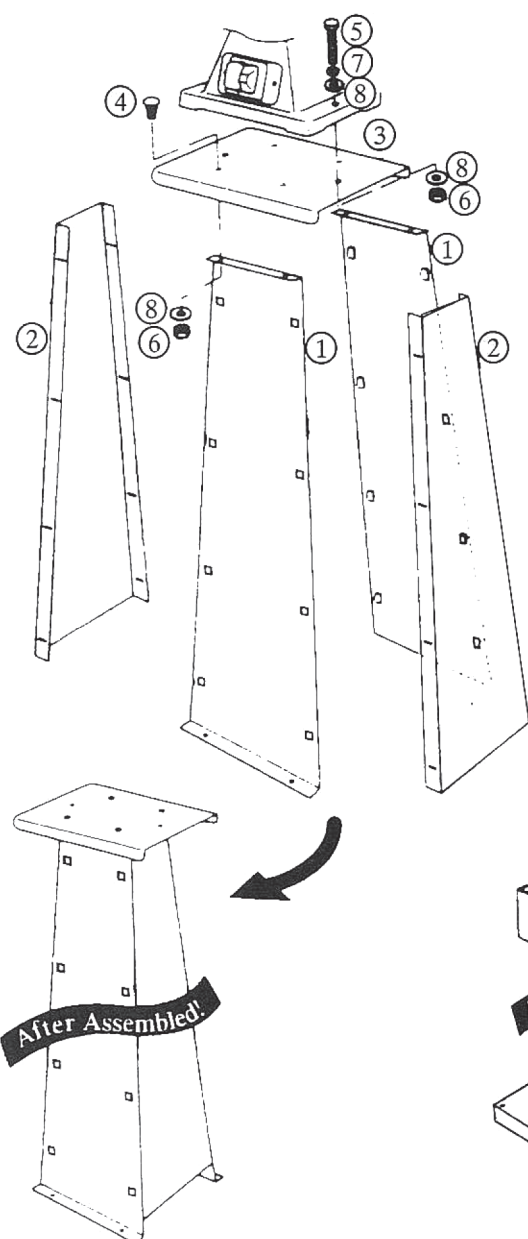
## Unpacking and checking list

### \*Universal Workstand

Ref. No.	Parts Name / Description	Q'ty
1	Stand Leg (front & rear)	2
2	Stand Leg (left & right)	2
3	Stand Top	1
4	Square Neck Bolt (5/16"-18NCx5/8")	4
5	Hex. Bolt(5/16"-18NCx1.5")	2
6	Hex. Bolt(5/16")	6
7	Spring Washer (M8)	6
8	Washer (M8x18x2t)	8

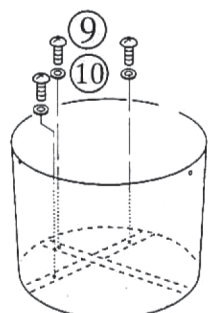
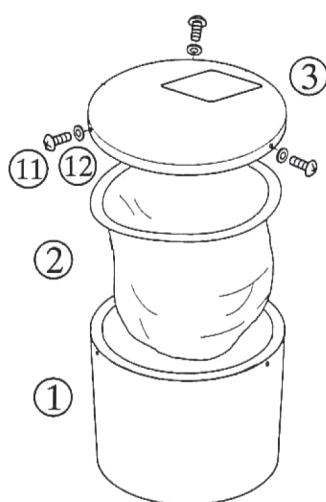
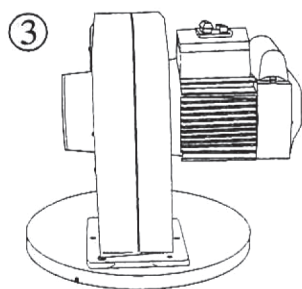
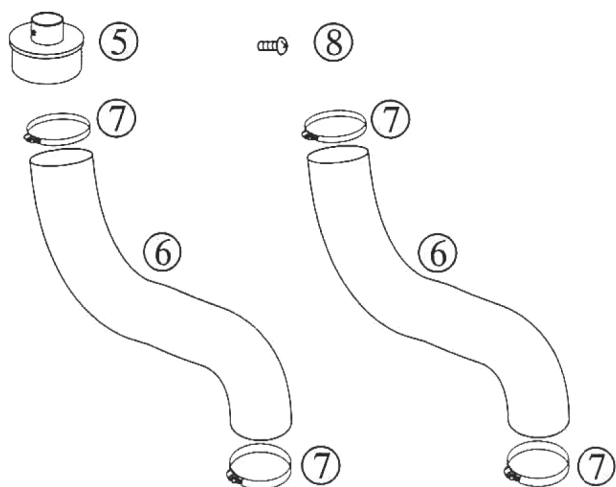
### \*Cabinet Workstand

Ref. No.	Parts Name / Description	Q'ty
1	Stand	1
2	Bottom Plate	1
3	Hex Bolt(M8X20L)	4
4	Spring Washer(M8)	6
5	Washer(M8x30x3t)	4
6	Washer(M8x18x2t)	2
7	Hex Bolt(M8x35L)	2
8	Cooler Boxer	1
9	Screw(M6x16)	2
10	Washer(M6x16x2t)	6
11	Hex Bolt(M6x12)	4
12	Spring Washer(M6)	4



# DUST COLLECTION DEVICE

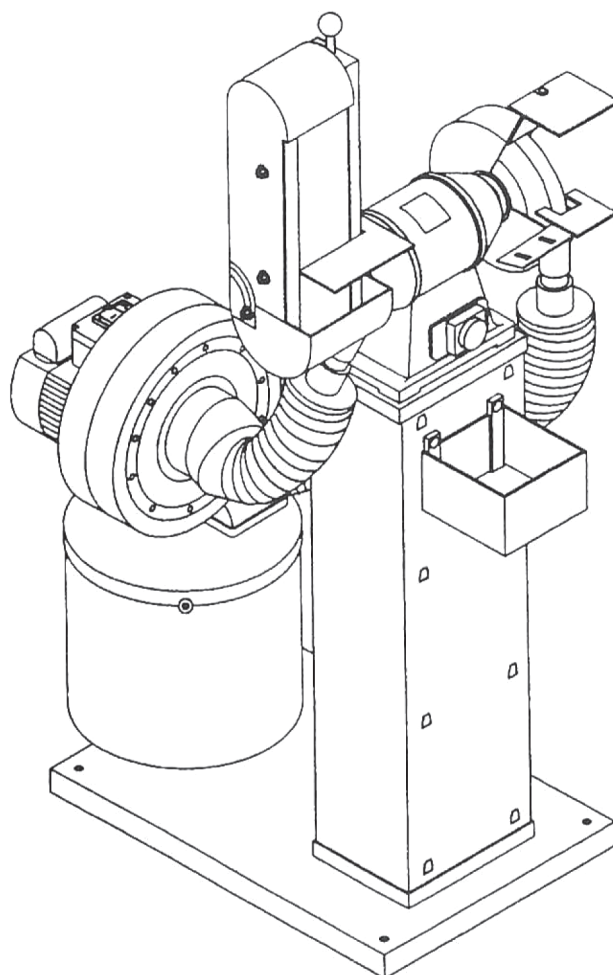
[Optional]



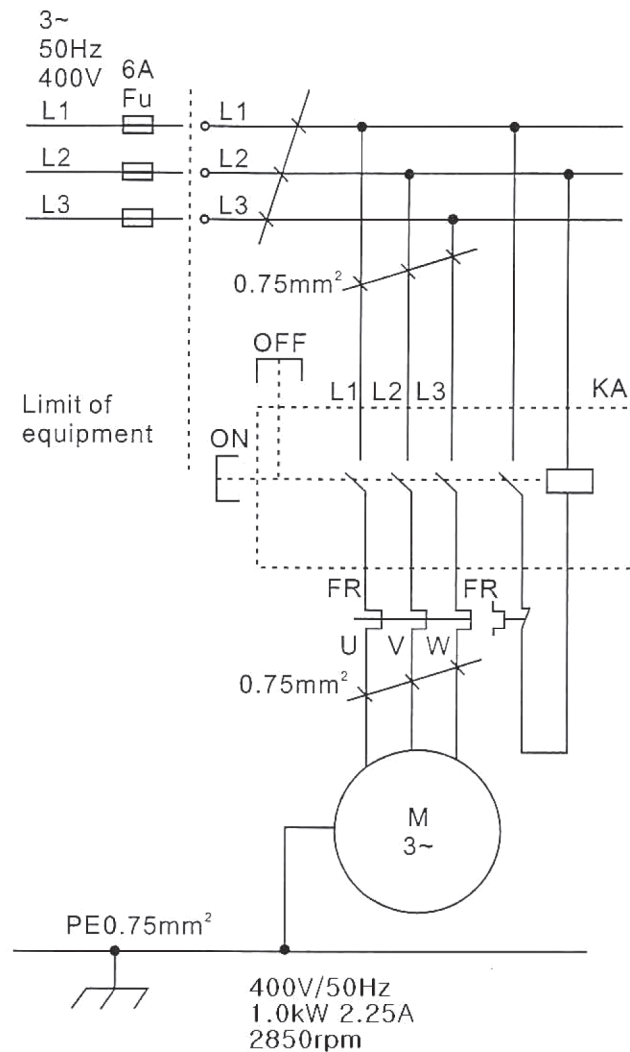
● The mounting of tank bottom for cabinet workstand.

## Unpacking and Checking List

Ref. No.	Parts Name / Description	Q'ty
1	Dust Collection Tank	1
2	Dust Collection Bag	1
3	Tank Cover, Collector Body with Motor	4
4	Chip Inlet (5"-4")	6
5	Chip Inlet (4"-1.5")	4
6	Hose (4")	2
7	Clamp (4.5")	2
8	Screw (M5x8)	1
9	Screw (M6x16)	2
10	Washer (M6x25x2t)	6
11	Screw (M6x12)	4
12	Washer (M6x18x2t)	4



## Electrical circuit diagram.



## Electrical components parts list.

Item Designation	Description & Function	Technical Data	Remark
KA	Magnetic contactor	400VAC 10A	
FR	Overload Protector	1.8-2.5/2.4A	CE,IEC947
	Cable	VCTF4x0.75mm <sup>2</sup>	

---

# Importance Notice For CE

---

## Handling of Sander

1. The net weight of this machine is about 36 kgs including stand, it is better to handle and transport with the help of lifting tools.
2. The total weight of machine must be ensured before handling.

## Environment Requirements for Installatin.

1. Be sure to provide sufficient light for operation according to the codes or regulations published for local area.
2. If you do not get the information about lighting, a lighting intensity of 300 LUX is the least of value to be supplied.

## Electrical Connection/Disconnection & Operation.

### FOR THREE PHASE

#### **1. Electrical connection:**

- 1.1. A cable with four wires is equipped to connect your machine into the 3 phase power supply.  
**Please connect your machine into the power supply with hand-operated disconnecting device**, which is in compliance with subclause 5.3 of EN60204-1, such as no fuse breaker or plug/socket combination.
- 1.2. For the protection of control device, we recommend the operator to supply **a fuse with 6A. current rating of fuse**, and the total length between fuse and connection terminal shall not exceed 1.5 m.
- 1.3. The **exact power source voltage, frequency, and number of phase** shall be checked according to the installation diagram and circuit diagram.
- 1.4. **The correct direction of grinder should be checked after connecting.**

#### **2. Electrical disconnection:**

- 2.1. The disconnection is carried out by hand-operated disconnecting device.
- 2.2. Be sure to disconnect this machine from power source, when you want to stop the job, maintenance, and adjustment.

#### **3. Grounding.**

The grounding of the sander is carried out **by connecting the Yellow/green terminal of supply cable** to the grounding terminal of power source. Be sure to ground your machine before connecting machine to power source in any situation.

**WARNING!**

*Do not disconnect grounding terminal before disconnecting power source.*

## OPERATION.

1. **"START"** : Push the button marked with " **I** ".
2. **"STOP"** : Push the button marked with " **0** " .

## MAINTNANCE:

1. Be sure to disconnect the machine from the power source.
2. If motor being overload, the overload relay will be active.
3. It is an automatic recovery type. The motor is liable to be restarted if overlord relay is cooled down automatically.

# PROMAC®

## Environmental protection

Protect the environment.

Your appliance contains valuable materials which can be recovered or recycled. Please leave it at a specialized institution.



This symbol indicates separate collection for electrical and electronic equipment required under the WEEE Directive (Directive 2012/19/EC) and is effective only within the European Union.

---

## Umweltschutz

Schützen Sie die Umwelt!

Ihr Gerät enthält mehrere unterschiedliche, wiederverwertbare Werkstoffe.  
Bitte entsorgen Sie es nur an einer spezialisierten Entsorgungsstelle.



Dieses Symbol verweist auf die getrennte Sammlung von Elektro- und Elektronikgeräten, gemäß Forderung der WEEE-Richtlinie (2012/19/EU). Diese Richtlinie ist nur innerhalb der Europäischen Union wirksam.

---

## Protection de l'environnement

Protégez l'environnement !

Votre appareil comprend plusieurs matières premières différentes et recyclables. Pour éliminer l'appareil usagé, veuillez l'apporter dans un centre spécialisé de recyclage des appareils électriques.



Ce symbole indique une collecte séparée des équipements électriques et électroniques conformément à la directive DEEE (2012/19/UE). Cette directive n'est efficace que dans l'Union européenne.



## **Warranty / Garantie**

TOOL FRANCE SARL guarantees that the supplied product(s) is/are free from material defects and manufacturing faults. This warranty does not cover any defects which are caused, either directly or indirectly, by incorrect use, carelessness, damage due to accidents, repairs or inadequate maintenance or cleaning as well as normal wear and tear.

Further details on warranty (e.g. warranty period) can be found in the General Terms and Conditions (GTC) that are an integral part of the contract. These GTC may be viewed on the website of your dealer or sent to you upon request.

TOOL FRANCE SARL reserves the right to make changes to the product and accessories at any time.

---

TOOL FRANCE SARL garantiert, dass das/die von ihr gelieferte/n Produkt/e frei von Material- und Herstellungsfehlern ist. Diese Garantie deckt keinerlei Mängel, Schäden und Fehler ab, die - direkt oder indirekt - durch falsche oder nicht sachgemäße Verwendung, Fahrlässigkeit, Unfallschäden, Reparaturen oder unzureichende Wartungs- oder Reinigungsarbeiten sowie durch natürliche Abnutzung durch den Gebrauch verursacht werden. Weitere Einzelheiten zur Garantie können den allgemeinen Geschäftsbedingungen (AGB) entnommen werden.

Diese können Ihnen auf Wunsch per Post oder Mail zugesendet werden.

TOOL FRANCE SARL behält sich das Recht vor, jederzeit Änderungen am Produkt und am Zubehör vorzunehmen.

---

TOOL FRANCE SARL garantit que le/les produit(s) fourni(s) est/sont exempt(s) de défauts matériels et de défauts de fabrication. Cette garantie ne couvre pas les défauts, dommages et défaillances causés, directement ou indirectement, par l'utilisation incorrecte ou inadéquate, la négligence, les dommages accidentels, la réparation, la maintenance ou le nettoyage incorrects et l'usure normale. Vous pouvez trouver de plus amples détails sur la garantie dans les conditions générales (CG).

Les CG peuvent être envoyées sur demande par poste ou par e-mail.

TOOL FRANCE SARL se réserve le droit d'effectuer des changements sur le produit et les accessoires à tout moment.

**TOOL FRANCE SARL**

9 Rue des Pyrénées, 91090 LISSES, France -  
[www.promac.fr](http://www.promac.fr)