

# PROMAC®

09-2019

## Scotch Brite

## 321PF



# CE

Schweiz / Suisse  
**JPW (TOOL) AG**  
Ackerstrasse 45, CH-8610 Uster,  
Switzerland  
[www.promac.ch](http://www.promac.ch)

France  
**TOOL FRANCE SARL**  
9 Rue des Pyrénées, 91090 LISSES,  
France  
[www.promac.fr](http://www.promac.fr)

**CE-Conformity Declaration**  
**CE-Konformitätserklärung**  
**Déclaration de Conformité CE**

**Product / Produkt / Produit:**

Scotch Brite

**Bandschleifmaschine**

**Touret à bande**

**321PF**

**Brand / Marke / Marque:**

**PROMAC**

**Manufacturer / Hersteller / Fabricant:**

TOOL FRANCE SARL

9 Rue des Pyrénées, 91090 LISSES, France

We hereby declare that this product complies with the regulations  
Wir erklären hiermit, dass dieses Produkt der folgenden Richtlinie entspricht  
Par la présente, nous déclarons que ce produit correspond aux directives suivantes

**2006/42/EC**

Machinery Directive

Maschinenrichtlinie

Directive Machines

**2014/30/EU**

electromagne compa bility

elektromagne sche Verträglichkeit

compa bilité électromagné que

**2011/65/EU**

RoHS directive / RoHS-Richtlinie / Directive RoHS

designed in consideration of the standards

und entsprechend folgender zusätzlicher Normen entwickelt wurde

et été développé dans le respect des normes complémentaires suivantes

**EN ISO 12100:2010**

**EN 62841-1:2015**

**EN 62841-3-4:2016**

**EN61000-6-4:2007+A1:2011**

Responsible for the Documentation / Dokumentations-Verantwortung / Responsabilité de Documentation:

Head Product-Mgmt. / Leiter Produkt-Mgmt. / Resp. Gestion des Produits

TOOL FRANCE SARL



2019-08-19 Christophe SAINT SULPICE, General Manager

TOOL FRANCE SARL

9 Rue des Pyrénées, 91090 LISSES, France

## **Contents**

Safety Rules for All Power Tools .....	4
Technical Data .....	5
Assembly Chart.....	6
Assembly Stand (option) .....	6
Handing of Machine .....	8
Environment Requirements for Installation .....	8
Electrical Connection / Disconnection & Operations .....	8
Operations.....	8
Electrical Circuit Diagram .....	9
Electrical Components List.....	9
321PF Exploded View .....	10
321PF Parts List.....	11

## **Safety Rules for All Power Tools**

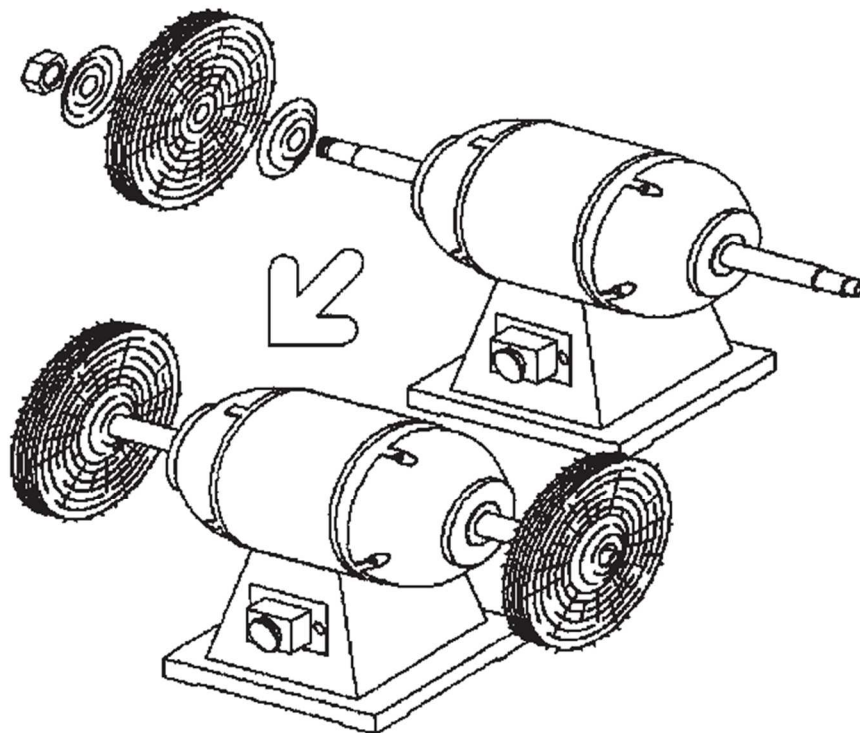
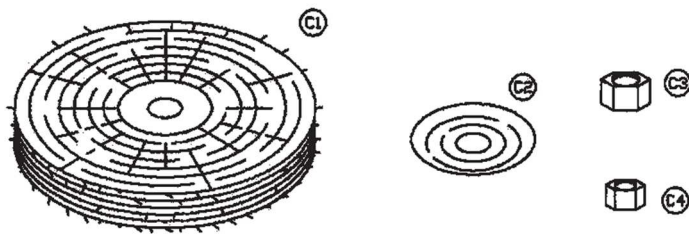
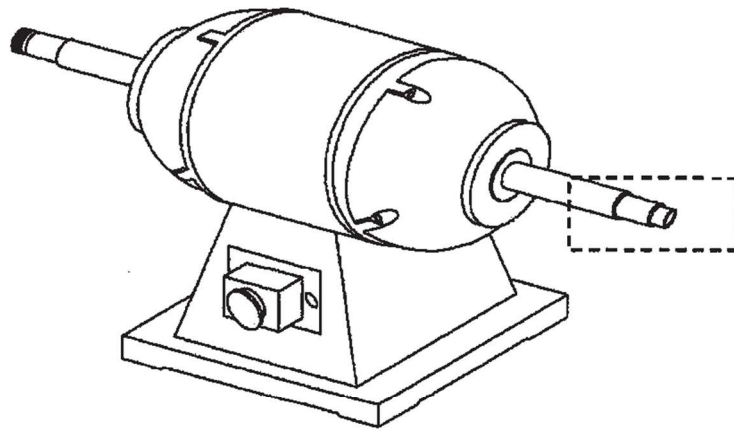
1. Read and become familiar with the entire instruction manual. Learn the tool's applications, limitations and possible hazards.
2. Earth all tools .If the tool is equipped with a three-prong plug. It must be plugged into a three-contact electric outlet. The third prong is a ground to provide protection against accidental electrical shock. If an adapter is used to accommodate a two-contact outlet, the adaptor's grounding lug must be connected to a known ground. Never remove the third prong on a three prong plug.
3. Check damaged parts. A guard or any other part that is damaged should be checked to ensure that it will operate properly and perform its intended function before the tool is used further. Check for proper alignment of moving parts and for possible broken parts, loose mountings, or any other condition that could affect the tool's operation. A guard or other damaged part should be properly repaired or replaced.
4. Disconnect power before servicing and when changing accessories such as blades, cutters.
5. Keep guards in place and in working order.
6. Protect your eyes from being injured by objects thrown by a power tool. Always wear safety glasses or safety goggles.
7. Wear a face mask or dust mask if the cutting operation produces dust.
8. Don't force the tool. It will give a better and safer performance when used on jobs for which it was designed.
9. Avoid accidental starting. Ensure that the power switch is in the OFF position before plugging in the power cord. Remove the switch when the tool is not being used.
10. Remove adjusting keys and wrenches. Ensure that keys and adjusting wrenches are removed from the tool before turning it on.
11. Drugs, alcohol, and medication. Do not operate tool if you are under the influence of drugs, alcohol, or medication that could affect your ability to use the tool properly.
12. Use recommended accessories. Using improper accessories can be hazardous. If in doubt, check the instruction manual.
13. Never stand on a tool. Falls can result in injury.
14. Never leave a tool running unattended. Turn the power switch OFF. Don't leave the tool until it has come to a complete stop.
15. Always remove the power cord plug from the electric outlet when making adjustments, changing parts, cleaning, or working on the table.
16. Avoid dangerous conditions. Don't use power tools in wet or damp areas or expose them to rain. Keep your work area clean and well lighted. Do not use power tools in areas where fumes from paint, solvents, or flammable liquids pose a potential hazard.
17. Keep visitors and children away. Other people should keep a safe distance from the work area, especially when the tool is operating.

18. Use the proper tool. Don't force a tool to do a job for which it was not designed.
19. Keep tools in top condition. Keep them clean and sharp for best and safest performance. Follow the instructions for changing accessories and lubricating.
20. Secure all work. When practical use clamps or a vise to hold work. It is safer than using your hands and prevents round or odd shaped pieces from turning.
21. Don't overreach. Keep proper footing and balance at all times. Wear oil resistant rubber-soled footwear. Keep the floor clear of oil, scrap wood, and other debris.
22. Wear proper clothing and, if necessary, protective hair covering. Loose clothing or jewelry can get caught in moving parts.
23. Make the workshop childproof with padlocks, master switches, or by removing starter keys.

### **Technical Data**

<b>Model</b>	<b>321PF</b>
Buffer Size (mm)	200 x 50
Motor (output)	3~400V, 50Hz, 1.5A, 0.5kw
Speed (rpm)	2850
Weight (NW / GW)	15 / 17kg
Dis. Between Mop Center (mm)	495
Noise Level (dB)	70

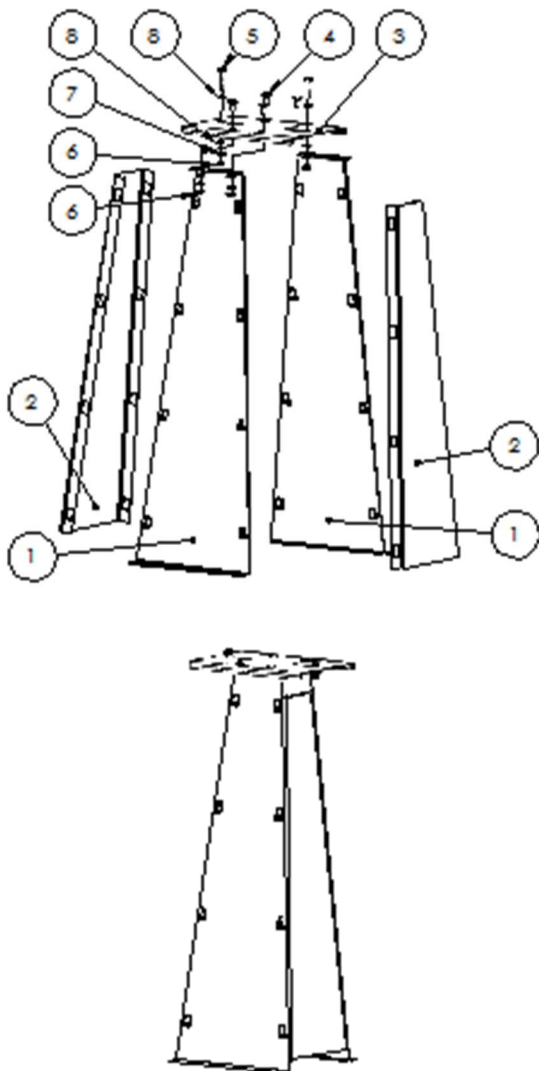
# Assembly Chart



## Assembly Stand (option)

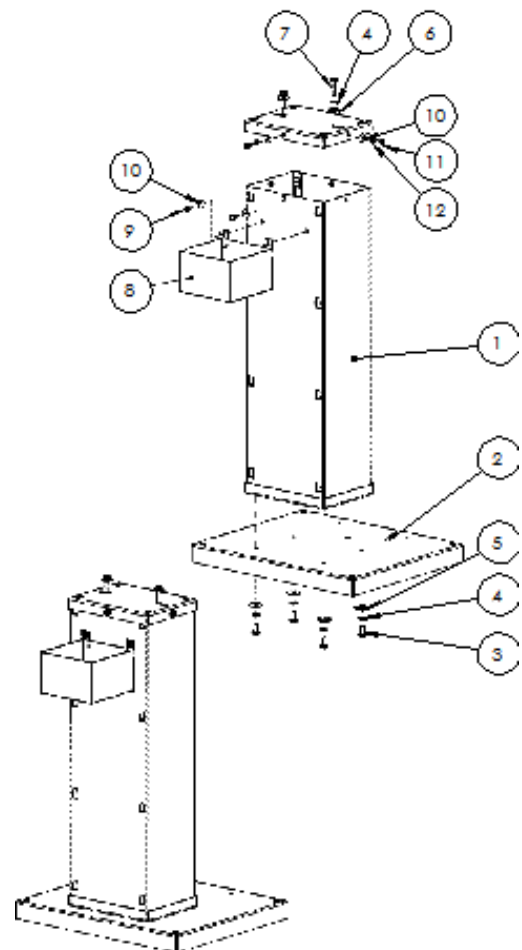
### Stand I

Index No.	Description	Q'ty
1	Stand Leg(front & rear)	2
2	Stand Leg(left & right)	2
3	Stand Top	1
4	Square Neck Bolt(5/16"-18NCx5/8")	4
5	Hex. Bolt(5/16"-18NCx2" L type)	2
	Hex. Bolt(5/16"-18NCx3/4" S type)	2
6	Hex Nut(5/16")	6
7	Spring Washer(M8)	6
8	Washer(M8x18x2t)	8



### Stand II

Index No.	Description	Q'ty
1	Stand	1
2	Bottom Plate	1
3	Hex Bolt(M8x20L)	4
4	Spring Washer(M8)	6
5	Washer(M8x30x3t)	4
6	Washer(M8x18x2t)	2
7	Hex Bolt(M8x35L)	2
8	Cooler Box	1
9	Screw(M6x16)	2
10	Washer(M5x16x2t)	6
11	Hex Bolt(M6x12)	4
12	Spring Washer(M6)	4



## **Handing of Machine**

1. The net weight of this machine is about 40Kgs including stand. The total weight of machine must be ensured before handling.
2. It is better to handle and transportation this machine with the help of lifting tools.

## **Environment Requirements for Installation**

1. Be sure to provide sufficient light for operation according to the codes or regulations published for local area. If you do not get the information about lighting.
2. A light intensity of 300 Lux is the least value to be supplied.

## **Electrical Connection / Disconnection & Operations**

### **FOR THREE PHASE**

#### **1. Electrical connection :**

- 1.1. A cable with four wires is equipped to connect your machine into the 3 phase power supply. Please connect your machine into the power supply with hand-operated disconnecting device, which is in compliance with subclasses 5.3 of EN60204-1, such as no fuse breaker or plug/socket combination.
- 1.2. For the protection of control device, we recommend the operator to supply a fuse with 6 amp. Current rating of fuse, and the total length between fuse and connection terminal shall not exceed 1.5 m.
- 1.3. The exact power source voltage, frequency, and number of phase shall be checked according to the installation diagram and circuit diagram.
- 1.4. The correct direction of grinder should be checked after connecting.

#### **2. Electrical disconnection :**

- 2.1. The disconnection is carried out by hand-operated disconnecting device.
- 2.2. Be sure to disconnect this machine from power source, when you want to stop the job, maintenance, and adjustment.

#### **3. Grounding**

The grounding of the grinder is carried out by connecting the Yellow / green terminal of supply cable to the grounding terminal of power source. Be sure to ground your machine before connecting machine to power source in any situation.

### **WARNING**

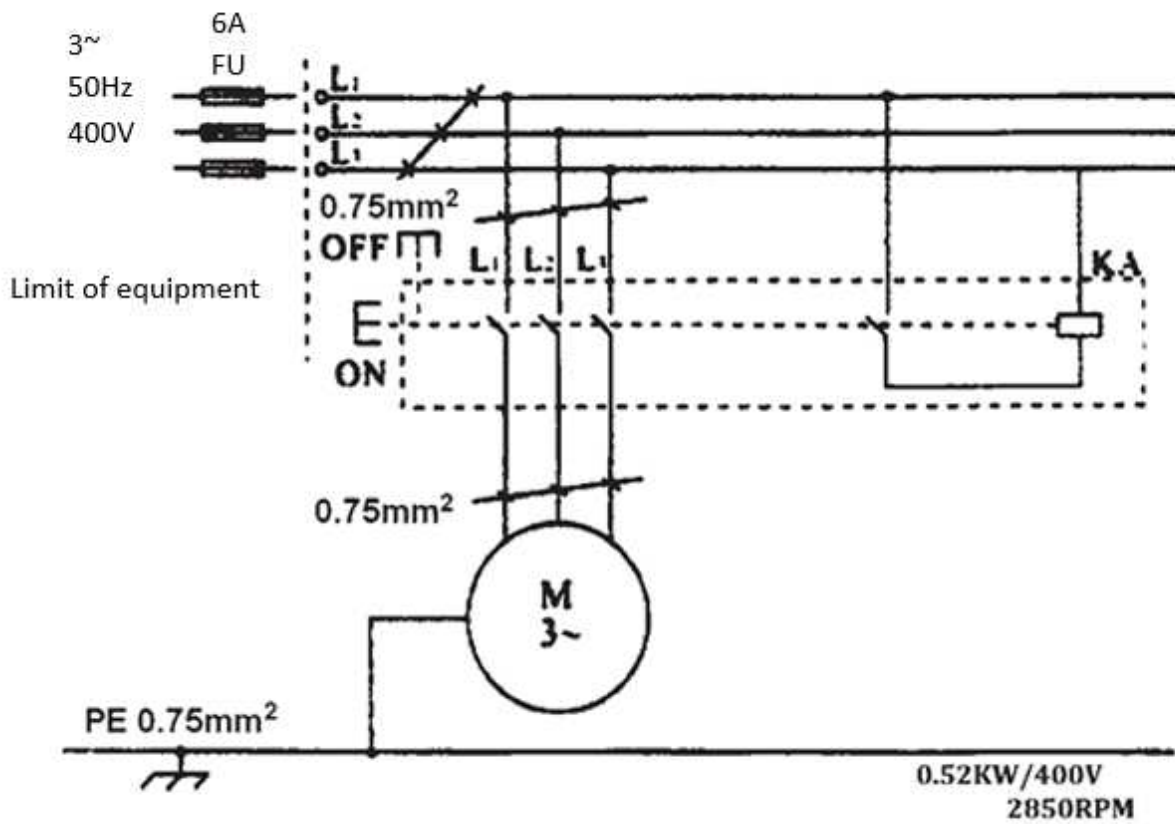
**Do not disconnect grounding terminal before disconnecting power source.**

## **Operations**

1. "START" : Push the switch marked with " I "
2. "STOP" : Push the switch marked with " O "



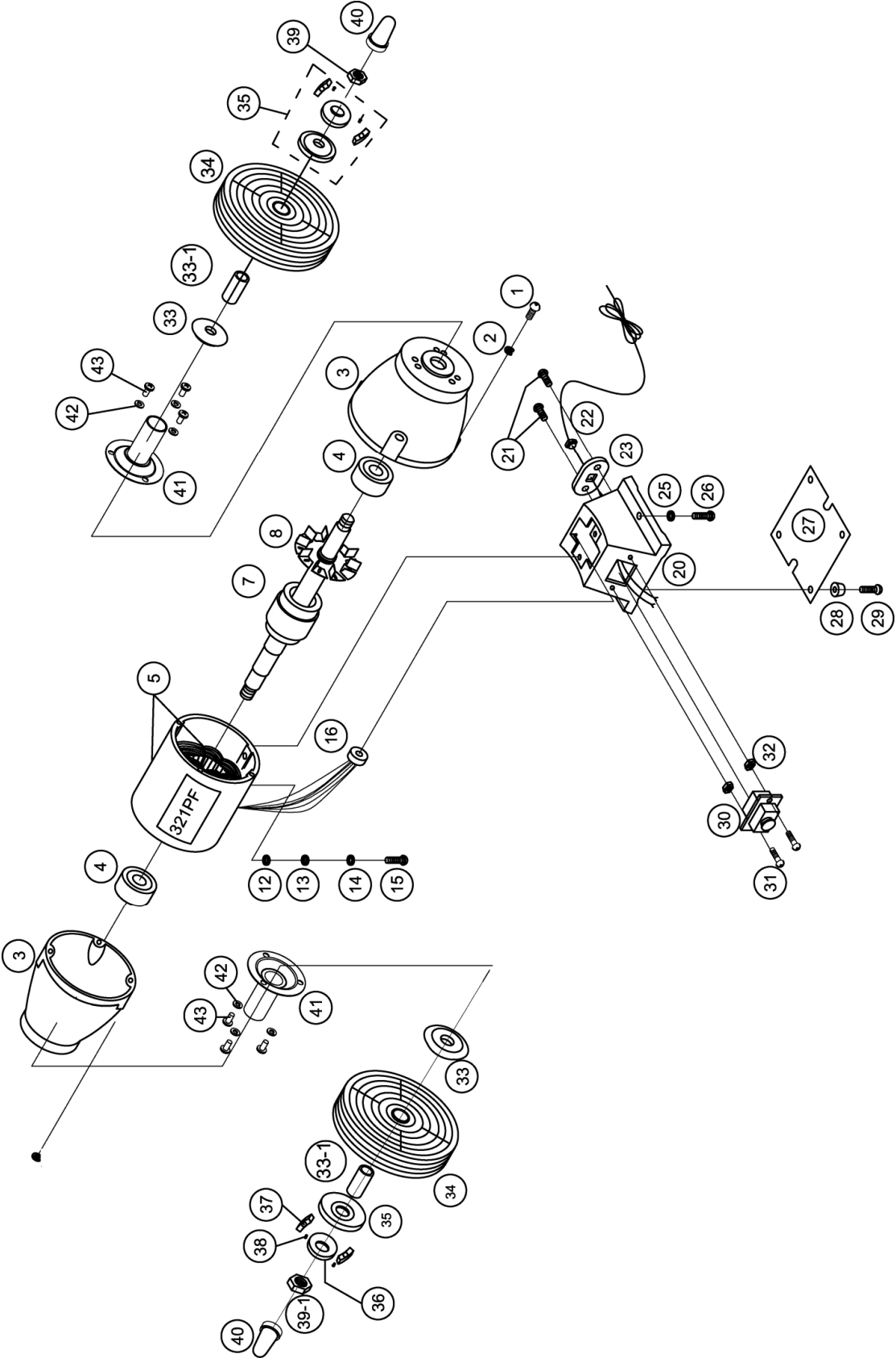
## Electrical Circuit Diagram



## Electrical Components List

Item	Description & Function	Technical Data	Remark
KA	Magnetic Contactor	400 Vac. 10A (three phase)	CE, JD2
XP	Plug for Supply	250V 16A	
	Cable	VCTF 4x0.75mm <sup>2</sup>	

**321PF Exploded View**



## 321PF Parts List

Index No.	Part No.	Description	Size	Qty.
1	TS-2205301	Hex Cap Screw	3/16"x1-1/4"	8
2	TS-2361051	Spring Washer	M5	8
3	PM-321PF003	Support	Ø117	2
4	BB-6204ZZ	Ball Bearing	6204ZZ	2
5	PM-321PF005	Stator & Housing	Ø117	1
7	PM-321PF007	Rotor Shaft	Ø117	1
8	PM-321PF008	Fan		1
12	TS-2193052	Ext. Washer	M5	1
13	PM-321PF013	Copper Set		1
14	TS-2193051	Int. Washer	M4.5	1
15	TS-1533052	Machine Screw	3/16"x5/8"	1
16	PM-321PF016	Grommet Rubber	3/4"	1
20	PM-321PF020	Base		1
21	TS-1533032	Machine Screw	3/16"x3/8"	2
22	PM-321PF022	Cable Strainer	6W3-4 UL	1
23	PM-321PF023	Fixing Plate		1
24	PM-321PF024	Power Cord		1
25	TS-1550041	Washer	M6x18x2.0T	4
26	TS-0050051	Hex Cap Screw	1/4"x1"	4
27	PM-321PF027	Base Plate		1
28	PM-321PF028	Pad		4
29	TS-2285121	Machine Screw Flat HD	3/16x1/2	4
30	PM-321PF030	NVR Switch		1
31	TS-1533052	Machine Screw	3/16"x5/8"	2
32	TS-1540031	Hex Nut	3/16"	2
33	PM-321PF033	Disc Washer	1/2HP-5/8"	2
33-1	PM-321PF033-1	Sleeve		2
34	PM-321PF034	MOP / Buffer	3M 8"x3/4"x50mm	2
35	PM-321PF035	Balancing Flange Assembly		2
39	PM-321PF039	Hex. Nut-Right	5/8" Right-Handed Screw	1
39-1	PM-321PF039-1	Hex. Nut-Left	5/8" Left-Handed Screw	1
40	PM-321PF040	Adaptor Cap		2
41	PM-321PF041	Shaft Guard		2
42	TS-2361061	Spring Washer	M6	6
43	TS-081F031	Machine Screw	1/4"x1/2	6



### Environmental protection

Protect the environment.

Your appliance contains valuable materials which can be recovered or recycled. Please leave it at a specialized institution.



This symbol indicates separate collection for electrical and electronic equipment required under the WEEE Directive (Directive 2012/19/EC) and is effective only within the European Union.



---

### Umweltschutz

Schützen Sie die Umwelt!

Ihr Gerät enthält mehrere unterschiedliche, wiederverwertbare Werkstoffe.  
Bitte entsorgen Sie es nur an einer spezialisierten Entsorgungsstelle.



Dieses Symbol verweist auf die getrennte Sammlung von Elektro- und Elektronikgeräten, gemäß Forderung der WEEE-Richtlinie (2012/19/EU). Diese Richtlinie ist nur innerhalb der Europäischen Union wirksam.



---

### Protection de l'environnement

Protégez l'environnement !

Votre appareil comprend plusieurs matières premières différentes et recyclables. Pour éliminer l'appareil usagé, veuillez l'apporter dans un centre spécialisé de recyclage des appareils électriques.



Ce symbole indique une collecte séparée des équipements électriques et électroniques conformément à la directive DEEE (2012/19/UE). Cette directive n'est efficace que dans l'Union européenne.





## **Warranty / Garantie**

JPW (Tool) AG guarantees that the supplied product(s) is/are free from material defects and manufacturing faults. This warranty does not cover any defects which are caused, either directly or indirectly, by incorrect use, carelessness, damage due to accidents, repairs or inadequate maintenance or cleaning as well as normal wear and tear.

Further details on warranty (e.g. warranty period) can be found in the General Terms and Conditions (GTC) that are an integral part of the contract.

These GTC may be viewed on the website of your dealer or sent to you upon request.

JPW (Tool) AG reserves the right to make changes to the product and accessories at any time.

---

JPW (Tool) AG garantiert, dass das/die von ihr gelieferte/n Produkt/e frei von Material- und Herstellungsfehlern ist.

Diese Garantie deckt keinerlei Mängel, Schäden und Fehler ab, die - direkt oder indirekt - durch falsche oder nicht sachgemäße Verwendung, Fahrlässigkeit, Unfallschäden, Reparaturen oder unzureichende Wartungs- oder Reinigungsarbeiten sowie durch natürliche Abnutzung durch den Gebrauch verursacht werden.

Weitere Einzelheiten zur Garantie können den allgemeinen Geschäftsbedingungen (AGB) entnommen werden.

Diese können Ihnen auf Wunsch per Post oder Mail zugesendet werden.

JPW (Tool) AG behält sich das Recht vor, jederzeit Änderungen am Produkt und am Zubehör vorzunehmen.

---

JPW (Tool) AG garantit que le/les produit(s) fourni(s) est/sont exempt(s) de défauts matériels et de défauts de fabrication. Cette garantie ne couvre pas les défauts, dommages et défaillances causés, directement ou indirectement, par l'utilisation incorrecte ou inadéquate, la négligence, les dommages accidentels, la réparation, la maintenance ou le nettoyage incorrects et l'usure normale.

Vous pouvez trouver de plus amples détails sur la garantie dans les conditions générales (CG).

Les CG peuvent être envoyées sur demande par poste ou par e-mail.

JPW (Tool) AG se réserve le droit d'effectuer des changements sur le produit et les accessoires à tout moment



**TOOL FRANCE SARL**

9 Rue des Pyrénées, 91090 LISSES, France

[www.promac.fr](http://www.promac.fr)